

Sprinter

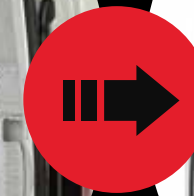
Upfit Guide



**WORK VEHICLES
THAT WORK BETTER!**

advantage
OUTFITTERS

What's the Advantage?



We make it Easy

- Simplified layout and design process
- Technical support and configuration assistance

We make it Fast

- Everything in this catalog is in stock
- Installs within 48 hours or less

We make it Last

- Certified and trained Installers
- Lifetime Installation Warranty

A simple 6 step process to an efficient work van

01. Start with **Interior Finishing**
02. Add a **Safety Partition**
03. Choose your **Shelving Package**
04. Add time-saving **Interior Accessories**
05. Select your **Roof Equipment**
06. Finish with **Exterior Accessories**

Advantage Outfitters is a commercial vehicle upfitter, specializing in storage equipment and accessories for cargo vans. With 20+ years of experience, we have earned the trust of contractors, trade fleets, utilities, municipalities, vehicle dealers, and leasing companies. We are defined by our strong team spirit and our passion for making work vehicles work better.



Contents

Interior Finishing	04 - 07	Interior Accessories	26 - 33
Wall Liners	04	Side-Door Drawer Systems	26 - 27
Flooring	05	Parts Keepers	28 - 29
Lashing / Seat Covers / Window Grills	06	Drawer Cabinets	30
Interior Lighting	07	Shelving Accessories	31
Safety Partitions	08 - 09	Cab Accessories	32
Straight Partitions	08	Bottle Holders	33
Contoured Partitions	09	Roof Equipment	34 - 37
Shelving Packages	10 - 24	Side Dropdown Rack	34
Base	14 - 15	Rear Dropdown Rack	35
General Service	16 - 17	Roof Decks and Cargo Racks	36
HVAC	18 - 19	Ladder Rack Accessories	37
Plumbing	20 - 21	Exterior Accessories	38 - 39
Electrical	22 - 23	Running Boards / Rear Steps	38
Delivery	24	Hitches / Windows	39
		Specialty Equipment	40-42
		Climate Control	40
		Inverters	41
		Liftgates	42
		Vehicle Layouts	43

Certified
Mercedes-Benz

EXPERT
UPFITTER



sales@advantageoutfitters.com

866.925.4844
advantageoutfitters.com

VanLiner Wall and Door Protection

- Protect your vehicle investment
- 3/16" light grey plastic with textured finish
- Highly durable & impact resistant



Model	Wall Panels Part#	Door Panels Part#	Model	Wall Panels Part#	Door Panels Part#
144 LR	601M1WL	601MXDPL	170 HR	601M4WL	601MXDPH
144 HR	601M2WL	601MXDPH	170 Ext HR	601M6WL	601MXDPH

Duratherm Insulated Kits

- 3/8" Heavy duty rigid grey plastic wall protection with 1/8" foil/foam insulation layer
- Provides sound deadening and an R4 equivalent thermal barrier
- Textured surface is scratch and impact resistant



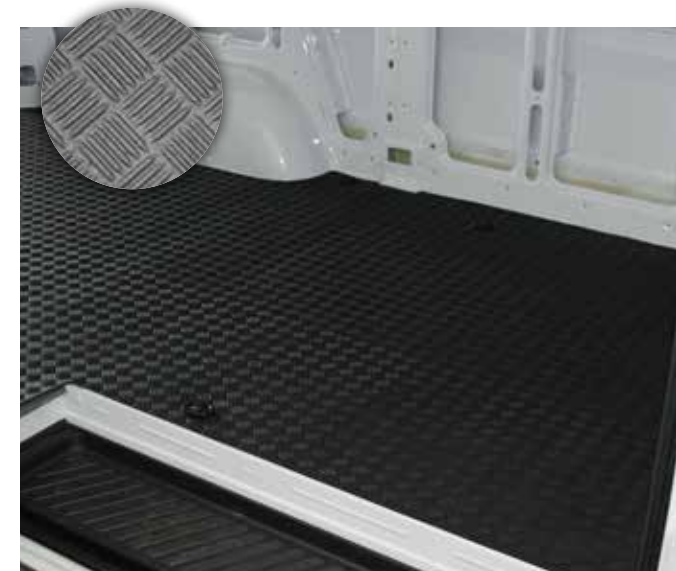
Model	Wall Liners Part#	Door Liners Part#	Ceiling Liners Part#
144 LR	654M1WL	654M1DL	654M1CL
144 HR	654M2WL	654M2DL	654M2CL
170 HR	654M4WL	654M2DL	654M4CL
170 Ext HR	654M6WL	654M2DL	654M6CL

* Door panels suitable for 2019 models onwards

Floor Protection

Rubber Mat

- 1/4" virgin rubber resists oils and chemicals
- Saves knees and increases traction
- One piece seamless



Model	Rubber Mat Part#	Dual Rear Wheel Model	Rubber Mat Part#
144" WB	654M1AM	144" WB DRW	654M1AMD
170" WB	654M4AM	170" WB DRW	654M4AMD
170" WB Ext	654M6AM	170" Ext WB DRW	654M6AMD

Door Sills

- Custom fit, heavy-duty diamond plate aluminum sill plates
- Protects entry points and provides traction

Description	Door Sill Part#
Set of 2 for Sliding Door and Rear Doors	654MXRSS

StabiliGrip Floor

- 1/2" hard plastic with fiberglass reinforcement
- Provides firm base for tools and equipment
- Durable, non-skid surface

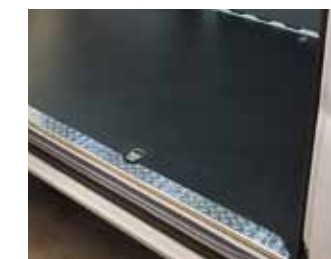


Model	StabiliGrip Floor Part#	Dual Rear Wheel Model	StabiliGrip Floor Part#
144" WB	654M1SG	144" WB DRW	654M1SGD
170" WB	654M4SG	170" WB DRW	654M4SGD
170" WB Ext	654M6SG	170" Ext WB DRW	654M6SGD

Wheel Well Covers

- Decreases road noise and provides a thermal barrier.
- **Please Note:** These wheel covers do NOT fit Sprinters with Dual Rear wheels or Super Single rear wheels.

Description	Part#
Wheel Well Covers, set of 2	854MXWCC



Side Door Sill



Rear Door Sill



INTERIOR FINISHING

INTERIOR FINISHING

Aluminum Lashing Rail

- Durable & versatile
- Single level kits come with 5 movable tie-down rings
- Double level kits come with 10 movable tie-down rings
- Ratchet straps also available



Model	Single Level Part#	Double Level Part#
144" WB LR	842M1LK	—
144" WB HR	842M1LK	842M2LK2
170" WB HR	842M4LK	842M4LK2
170" WB Ext HR	842M6LK	842M6LK2

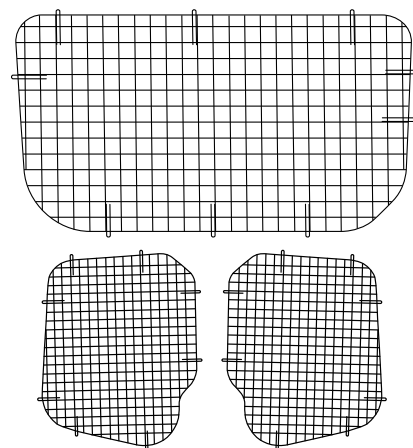
Seat Covers

- Custom-fit
- Tough Cordura fabric
- Will not fit seats with thigh bolster



Window Grills

- Black painted wire mesh construction



Description	Part#	Description	Part#
Seat Covers (set of 2)	876MXSC	Side Sliding Door	876MXSG
		Rear Doors (set of 2)	876MXRG

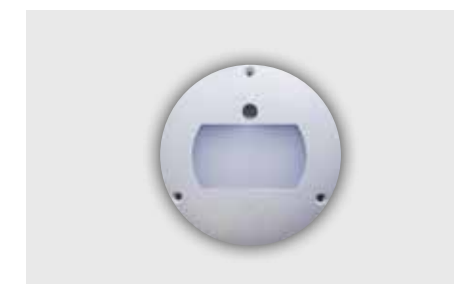
Strip Lighting

- High intensity 2' LED light
- Mounts to side of ceiling ribs to maintain headroom'
- Light is not compatible with ceiling liners
- Wired with OEM (door) switch
- 2 recommended for 144" WB vans
- 3 recommended for 170" and 170" EXT WB vans



Description	Part#
Single 2' LED light	452XXLD2

Motion Sensor Lighting



- Motion sensor activated
- Recommended for install with Duratherm ceilings
- 2 recommended for 144" WB vans
- 3 recommended for 170" and 170" EXT WB vans

Description	Part#
1 LED light	454XXLK1
2 LED lights	454XXLK2
3 LED lights	454XXLK3
Bracket and hardware	454XXBH*

* Required for vans without ceiling

Our 6 Step Process

Start with Interior Finishing 01

Add Safety and Security 02

Choose your Shelving Package 03

Add time-saving Interior Accessories 04

Select your Roof Equipment 05

Finish with Exterior Accessories 06

INTERIOR FINISHING

INTERIOR FINISHING

Partitions Without Door

Pass Through

- Galvanized steel
- 3.5" setback for increased cab space
- Drivers side and passenger panels only

Full Partition

- Galvanized steel
- 3.5" setback for increased cab space
- Includes a Mesh upper for visibility into rear
- Includes center panel



Pass Through Partition

Full Partition

Available with or without center panel.

Description	Low Roof Part#	High Roof Part#
Pass Through Partition	276M1PTP	276M2PTP
Full Partition	276M1SP	276M2SP

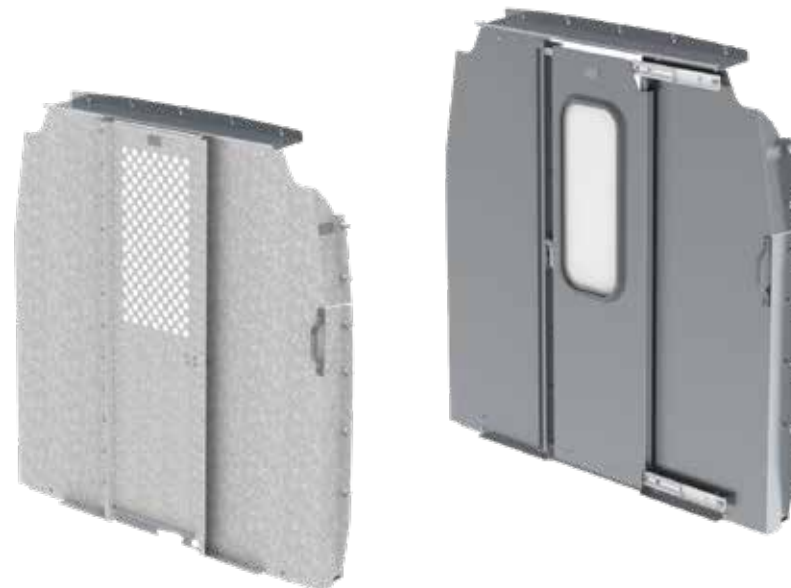
Partitions With Door

Swing Door Partition

- Galvanized steel
- Hinged door with latch
- 3.5" setback for increased cab space
- Mesh upper for visibility into rear
- Versatile & economical

Sliding Door Partition

- Lightweight & durable aluminum
- Lockable sliding door
- Window for visibility into rear
- Rattle free design
- 3.5" setback for increased cab space



Swing Door Partition

Sliding Door Partition

Description	Low Roof Part#	High Roof Part#
Swing Door Partition	276M1HDP	276M2HDP
Sliding Door Partition	176M1SDP	176M2SDP

Contoured Composite Partitions

- Designed for maximum impact resistance
- Thermally stable in any weather condition
- Perfect fit regulates heating and cooling in the cab
- Keeps dust and smells in the rear from getting into the cab
- 8" setback with recessed area for headrest



Solid Composite

Composite with Window

Description	Low Roof Part#	High Roof Part#
Solid Composite	176M1P-C	176M2P-C
Composite With Window	176M1P-CW	176M2P-CW

Contoured Aluminum Partitions

- Lightweight & durable aluminum
- Contoured design gives 5.5" additional setback for increased cab space
- Tough and durable Construction



Contoured Solid Partition

Contoured Partition with Window

Description	Low Roof Part#	High Roof Part#
Contoured Solid Partition	176M1CP	176M2CP
Contoured Partition with Window	176M1WP	176M2WP

Crew Van Partitions

- Lightweight aluminum
- Custom fit for behind side sliding door



Solid Partition

Partition with Window

Description	High Roof Part#
Solid Partition	176M2CVP
Solid Partition Window	176M2CVPW

Increase your productivity with our Trade-Specific Packages



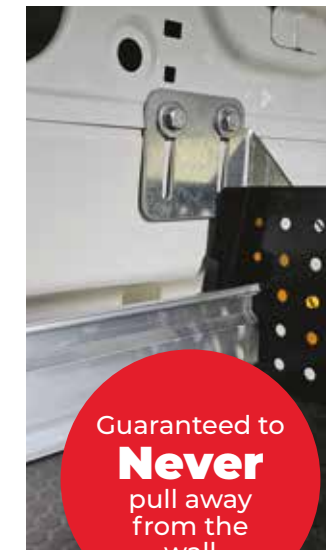
What's our Shelving Advantage?

Durable



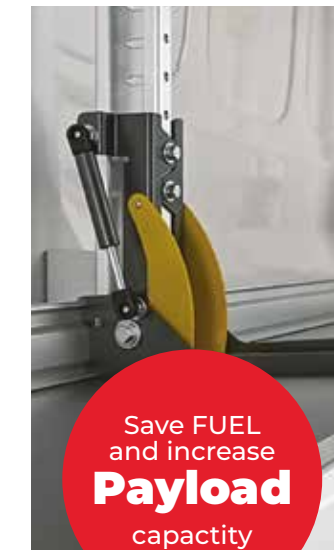
Load tested to **1200 lbs** per shelf

Secure



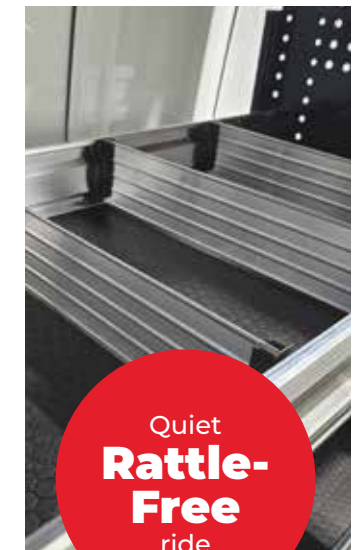
Guaranteed to **Never** pull away from the wall

Lightweight



Save **FUEL** and increase **Payload** capacity

Quiet



Quiet **Rattle-Free** ride

Here's what our customers say about their outfitted vans

"My technicians are able to keep the vans organized, which increases our overall efficiency."

Mike S.
HVAC Service Company.



"You really helped us get the maximum benefit out of our vehicles."

Michael R.
Fire Protection Company.



Our 6 Step Process

Start with Interior Finishing 01

Add Safety and Security 02

Choose your Shelving Package 03

Add time-saving Interior Accessories 04

Select your Roof Equipment 05

Finish with Exterior Accessories 06

Choose our Standard SHELVING PACKAGE

Hybrid Steel / Aluminum design for reduced weight



Cost-effective packages for any budget



62" High powder-coated steel end panel to optimize space



Composite shelf bottoms for a quiet ride



Durable Construction for years of service

Or Upgrade to our Premium Aluminum SHELVING PACKAGE

advantage
OUTFITTERS

Ultra lightweight design for maximum fuel savings



62" High aluminum end panel to optimize space



Corrosion-resistant and rust-free



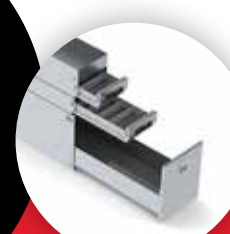
All trade-specific packages come with a side drawer system



see page 26



Includes an All-aluminum additional drawer system at side door



Premium Upfits for the most demanding professionals

STANDARD SHELVING PACKAGE

PREMIUM SHELVING PACKAGE

Base Package 144" WB

Driver's side includes:

- (1) 62"H x 96"L 4-shelf shelving unit

Passenger's side includes:

- (1) 62"H x 48"L 4-shelf shelving unit



Partitions And Flooring Are Not Included In Shelving Packages

Description	Part#
Base Package, 144" WB	276M1BP

Base Package (Aluminum) 144" WB

Driver's side includes:

- (1) 62"H x 96"L 4-shelf shelving unit

Passenger's side includes:

- (1) 62"H x 48"L 4-shelf shelving unit



Partitions And Flooring Are Not Included In Shelving Packages

Description	Part#
Aluminum Base Package, 144" WB	176M1BP

Base Package 170" WB

Driver's side includes:

- (2) 62"H x 60"L 4-shelf shelving units

Passenger's side includes:

- (1) 62"H x 60"L 4-shelf shelving unit



Partitions And Flooring Are Not Included In Shelving Packages

Description	Part#
Base Package, 170" WB	276M4BP

Base Package (Aluminum) 170" WB

Driver's side includes:

- (2) 62"H x 60"L 4-shelf shelving units

Passenger's side includes:

- (1) 62"H x 60"L 4-shelf shelving unit



Partitions And Flooring Are Not Included In Shelving Packages

Description	Part#
Aluminum Base Package, 170" WB	176M4BP

General Service Package 144" WB

Driver's side includes:

- (1) 62"H x 96"L 4-shelf shelving unit
- (10) adjustable 3" rattle-free dividers
- (2) 18.5"W x 10.5"H 2-drawer cabinets
- (1) fixed hook

Passenger's side includes:

- (1) 62"H x 48"L 4-shelf shelving unit
- (4) 14"D x 12"W plastic bins
- (1) swivel hook



Partitions And Flooring Are Not Included In Shelving Packages

Description	Part#
General Service Package, 144" WB	276M1GSP

General Service Package (Aluminum) 144" WB

Driver's side includes:

- (1) 62"H x 96"L 4-shelf shelving unit
- (10) adjustable 3" rattle-free dividers
- (2) 18.5"W x 10.5"H 2-drawer cabinets
- (1) fixed hook

Passenger's side includes:

- (1) 62"H x 48"L 4-shelf shelving unit
- (4) 14"D x 12"W plastic bins
- (1) swivel hook

Drawer system includes:

- (1) 48"D x 16"W x 19"H jumbo tool drawer
- (2) 48"D x 12"W x 6"H partslider drawers
- (1) 48"D x 12"W x 4"H top edge



Partitions And Flooring Are Not Included In Shelving Packages

Description	Part#
Aluminum General Service Package, 144" WB	176M1GSP

General Service Package 170" WB

Driver's side includes:

- (2) 62"H x 60"L 4-shelf shelving units
- (10) adjustable 3" rattle-free dividers
- (2) 18.5"W x 10.5"H 2-drawer cabinets
- (1) fixed hook

Passenger's side includes:

- (1) 62"H x 60"L 4-shelf shelving unit
- (5) 14"D x 12"W plastic bins
- (1) swivel hook



Partitions And Flooring Are Not Included In Shelving Packages

Description	Part#
General Service Package, 170" WB	276M4GSP

General Service Package (Aluminum) 170" WB

Driver's side includes:

- (2) 62"H x 60"L 4-shelf shelving units
- (10) adjustable 3" rattle-free dividers
- (2) 18.5"W x 10.5"H 2-drawer cabinets
- (1) fixed hook

Passenger's side includes:

- (1) 62"H x 60"L 4-shelf shelving unit
- (5) 14"D x 12"W plastic bins
- (1) swivel hook

Drawer system includes:

- (1) 48"D x 16"W x 19"H jumbo tool drawer
- (2) 48"D x 12"W x 6"H partslider drawers
- (1) 48"D x 12"W x 4"H top edge



Partitions And Flooring Are Not Included In Shelving Packages

Description	Part#
Aluminum General Service Package, 170" WB	176M4GSP

HVAC Package 144" WB

Driver's side includes:

- (1) 62"H x 96"L 4-shelf shelving unit
- (8) 14"D x 12"W plastic bins
- (2) 18.5"W x 10.5"H 2-drawer cabinets
- (1) large gas bottle holder
- (1) fixed hook

Passenger's side includes:

- (1) 62"H x 48"L 4-shelf shelving unit
- (10) adjustable 3" rattle-free dividers
- (1) 43"H x 10.5"W 4-tier refrigerant rack for bottles
- (1) swivel hook



Partitions And Flooring Are Not Included In Shelving Packages

Description	Part#
HVAC Package, 144" WB	276M1HP

HVAC Package (Aluminum) 144" WB

Driver's side includes:

- (1) 62"H x 96"L 4-shelf shelving unit
- (8) 14"D x 12"W plastic bins
- (2) 18.5"W x 10.5"H 2-drawer cabinets
- (1) large gas bottle holder
- (1) fixed hook

Passenger's side includes:

- (1) 62"H x 48"L 4-shelf shelving unit
- (10) adjustable 3" rattle-free dividers
- (1) 43"H x 10.5"W 4-tier refrigerant rack for bottles
- (1) swivel hook

Drawer system includes:

- (1) 48"D x 16"W x 19"H jumbo tool drawer
- (1) 48"D x 12"W x 6"H partslider drawer
- (1) 48"W x 13"H horizontal refrigerant rack for 4 bottles



• All-aluminum
• Additional drawer system at side door

Partitions And Flooring Are Not Included In Shelving Packages

Description	Part#
Aluminum HVAC Package, 144" WB	176M1HP

HVAC Package 170" WB

Driver's side includes:

- (2) 62"H x 60"L 4-shelf shelving units
- (10) 14"D x 12"W plastic bins
- (2) 18.5"W x 10.5"H 2-drawer cabinets
- (1) large gas bottle holder
- (1) fixed hook

Passenger's side includes:

- (1) 62"H x 60"L 4-shelf shelving unit
- (10) adjustable 3" rattle-free dividers
- (1) 43"H x 10.5"W 4-tier refrigerant rack for bottles
- (1) swivel hook



Partitions And Flooring Are Not Included In Shelving Packages

Description	Part#
HVAC Package, 170" WB	276M4HP

HVAC Package (Aluminum) 170" WB

Driver's side includes:

- (2) 62"H x 60"L 4-shelf shelving units
- (10) 14"D x 12"W plastic bins
- (2) 18.5"W x 10.5"H 2-drawer cabinets
- (1) large gas bottle holder
- (1) fixed hook

Passenger's side includes:

- (1) 62"H x 60"L 4-shelf shelving unit
- (10) adjustable 3" rattle-free dividers
- (1) 43"H x 10.5"W 4-tier refrigerant rack for bottles
- (1) swivel hook

Drawer system includes:

- (1) 48"D x 16"W x 19"H jumbo tool drawer
- (1) 48"D x 12"W x 6"H partslider drawer
- (1) 48"W x 13"H horizontal refrigerant rack for 4 bottles



Partitions And Flooring Are Not Included In Shelving Packages

Description	Part#
Aluminum HVAC Package, 170" WB	176M4HP

Plumbing Package 144" WB

Driver's side includes:

- (1) 62"H x 96"L 4-shelf shelving unit
- (10) adjustable 3" rattle-free dividers
- (1) 18.5"W x 10.5"H 2-drawer cabinet
- (1) 18.5"W x 10.5"H 3-drawer cabinet
- (1) large gas bottle holder
- (1) fixed hook

Passenger's side includes:

- (1) 62"H x 48"L 5-shelf shelving unit
- (16) 14"D x 12"W plastic bins
- (8) cross dividers for bins
- (1) large gas bottle holder
- (1) swivel hook



Partitions And Flooring Are Not Included In Shelving Packages

Description	Part#
Plumbing Package, 144" WB	276M1PP

Plumbing Package (Aluminum) 144" WB

Driver's side includes:

- (1) 62"H x 96"L 4-shelf shelving unit
- (10) adjustable 3" rattle-free dividers
- (1) 18.5"W x 10.5"H 2-drawer cabinet
- (1) 18.5"W x 10.5"H 3-drawer cabinet
- (1) large gas bottle holder
- (1) fixed hook

Passenger's side includes:

- (1) 62"H x 48"L 5-shelf shelving unit
- (16) 14"D x 12"W plastic bins
- (8) cross dividers for bins
- (1) large gas bottle holder
- (1) swivel hook

Drawer system includes:

- (1) 48"D x 16"W x 19"H jumbo tool drawer
- (1) 48"D x 12"W x 4"H top edge
- (2) 6"H raises for pipe or lumber for 4 bottles



- All-aluminum
- Additional drawer system at side door

Partitions And Flooring Are Not Included In Shelving Packages

Description	Part#
Aluminum Plumbing Package, 144" WB	176M1PP

Plumbing Package 170" WB

Driver's side includes:

- (2) 62"H x 60"L 4-shelf shelving unit
- (10) adjustable 3" rattle-free dividers
- (1) 18.5"W x 10.5"H 2-drawer cabinet
- (1) 18.5"W x 10.5"H 3-drawer cabinet
- (1) large gas bottle holder
- (1) fixed hook

Passenger's side includes:

- (1) 62"H x 60"L 5-shelf shelving unit
- (20) 14"D x 12"W plastic bins
- (10) cross dividers for bins
- (1) large gas bottle holder
- (1) swivel hook



Partitions And Flooring Are Not Included In Shelving Packages

Description	Part#
Plumbing Package, 170" WB	276M4PP

Plumbing Package (Aluminum) 170" WB

Driver's side includes:

- (2) 62"H x 60"L 4-shelf shelving unit
- (10) adjustable 3" rattle-free dividers
- (1) 18.5"W x 10.5"H 2-drawer cabinet
- (1) 18.5"W x 10.5"H 3-drawer cabinet
- (1) large gas bottle holder
- (1) fixed hook

Passenger's side includes:

- (1) 62"H x 60"L 5-shelf shelving unit
- (20) 14"D x 12"W plastic bins
- (10) cross dividers for bins
- (1) large gas bottle holder
- (1) swivel hook

Drawer system includes:

- (1) 48"D x 16"W x 19"H jumbo tool drawer
- (1) 48"D x 12"W x 4"H top edge
- (2) 6"H raises for pipe or lumber



Partitions And Flooring Are Not Included In Shelving Packages

Description	Part#
Aluminum Plumbing Package, 170" WB	176M4PP

Electrical Package 144" WB

Driver's side includes:

- (1) 62"H x 96"L 4-shelf shelving unit
- (8) 14"D x 12"W plastic bins
- (2) 11"H x 48"L locking cabinets
- (1) 18.5"W x 10.5"H 2-drawer cabinet
- (1) 18.5"W x 10.5"H 3-drawer cabinet
- (1) wire reel holder
- (1) fixed hook

Passenger's side includes:

- (1) 62"H x 48"L 4-shelf shelving unit
- (10) adjustable 3" rattle-free dividers
- (1) swivel hook



Partitions And Flooring Are Not Included In Shelving Packages

Description	Part#
Electrical Package, 144" WB	276M1EP

Electrical Package (Aluminum) 144" WB

Driver's side includes:

- (1) 62"H x 96"L 4-shelf shelving unit
- (8) 14"D x 12"W plastic bins
- (2) 11"H x 48"L locking cabinets
- (1) 18.5"W x 10.5"H 2-drawer cabinet
- (1) 18.5"W x 10.5"H 3-drawer cabinet
- (1) wire reel holder
- (1) fixed hook

Passenger's side includes:

- (1) 62"H x 48"L 4-shelf shelving unit
- (10) adjustable 3" rattle-free dividers
- (1) swivel hook

Drawer system includes:

- (1) 48"D x 16"W x 19"H jumbo tool drawer
- (1) 48"D x 12"W x 6"H partslider drawer
- (1) 48"D x 12"W x 4"H top edge



Partitions And Flooring Are Not Included In Shelving Packages

Description	Part#
Aluminum Electrical Package, 144" WB	176M1EP

Electrical Package 170" WB

Driver's side includes:

- (2) 62"H x 60"L 4-shelf shelving units
- (10) 14"D x 12"W plastic bins
- (2) 11"H x 60"L locking cabinets
- (1) 18.5"W x 10.5"H 2-drawer cabinet
- (1) 18.5"W x 10.5"H 3-drawer cabinet
- (1) wire reel holder
- (1) fixed hook

Passenger's side includes:

- (1) 62"H x 60"L 4-shelf shelving unit
- (10) adjustable 3" rattle-free dividers
- (1) swivel hook



Partitions And Flooring Are Not Included In Shelving Packages

Description	Part#
Electrical Package, 170" WB	276M4EP

Electrical Package (Aluminum) 170" WB

Driver's side includes:

- (2) 62"H x 60"L 4-shelf shelving units
- (10) 14"D x 12"W plastic bins
- (2) 11"H x 60"L locking cabinets
- (1) 18.5"W x 10.5"H 2-drawer cabinet
- (1) 18.5"W x 10.5"H 3-drawer cabinet
- (1) wire reel holder
- (1) fixed hook

Passenger's side includes:

- (1) 62"H x 60"L 4-shelf shelving unit
- (10) adjustable 3" rattle-free dividers
- (1) swivel hook

Drawer system includes:

- (1) 48"D x 16"W x 19"H jumbo tool drawer
- (1) 48"D x 12"W x 6"H partslider drawer
- (1) 48"D x 12"W x 4"H top edge



Partitions And Flooring Are Not Included In Shelving Packages

Description	Part#
Aluminum Electrical Package, 170" WB	176M4EP

Delivery Package 144" WB

Driver's side includes:

- (2) 63"H x 48"L 2-shelf units with folding shelves

Passenger's side includes:

- (1) 63"H x 48"L 2-shelf unit with folding shelves



Description	Part#
Delivery Package, 144" WB	176M1DP

Delivery Package 170" WB

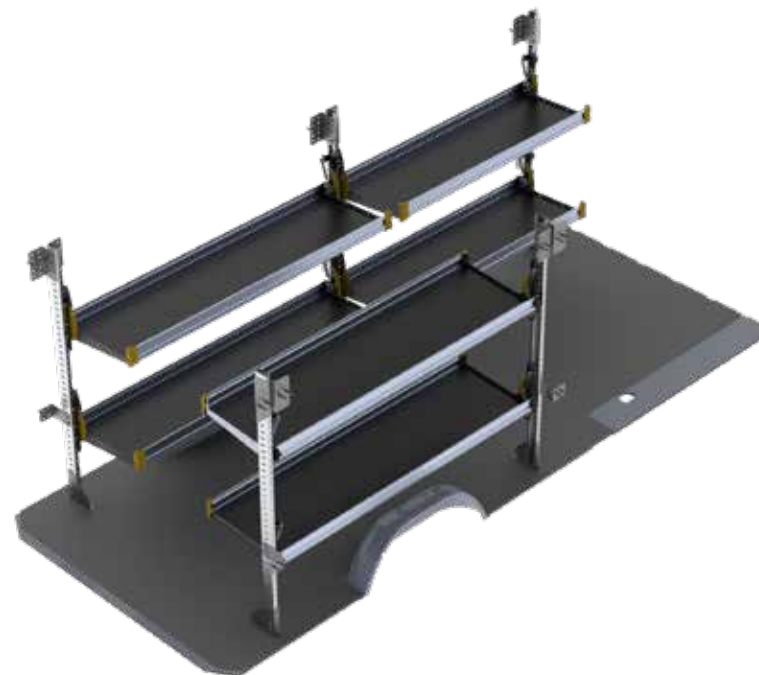
Driver's side includes:

- (1) 63"H x 58"L 2-shelf unit with folding shelves
- (1) 63"H x 72"L 2-shelf unit with folding shelves

Passenger's side includes:

- (1) 63"H x 72"L 2-shelf unit with folding shelves

- Folding shelves keep aisle clear when not in use
- Gas shock holds shelf in either up or down position - no latches or rattles
- Capacity is 250 lbs. per shelving unit
- Shelves are 20" deep



Description	Part#
Delivery Package, 170" WB	176M4DP

Don't see what you're looking for?

Contact us to design a custom build, we love a challenge!



Mobile Laboratory

Challenge: A manufacturer was looking to perform climate controlled hydraulic tool calibration onsite for their customers.



Incident Command

Challenge: A regional OEM was looking to manage agency communications and radio distribution at major emergency scenes.



Mobile Showroom

Challenge: A luxury stone & tile distributor was looking to grow their business by bringing their showroom to their clients.

DO YOU HAVE A FLEET OF 10+ VANS?

Contact us to learn about our fleet upfit solutions



Organized Time Saver

Access your most common items without even entering your vehicle.



Build a drawer system that works best for you

01. Start with a **Tool Drawer** for power tools and bags
02. Add **Parts Drawers** for hand tools and components
03. Finish with a **Top Tray** and crates or a **Worktop** surface

Our 6 Step Process

Start with Interior Finishing 01	Add Safety and Security 02	Choose your Shelving Package 03
Add time-saving Interior Accessories 04	Select your Roof Equipment 05	Finish with Exterior Accessories 06

Standard Tool Drawer

- Aluminum
- Weight capacity: 320 lbs.
- Open interior for tool bags & cases
- Dimensions: 14"W x 48"L x 16"
- Lockable



Description	Part#
Standard Tool Drawer	176XXSTD

Tool Drawer

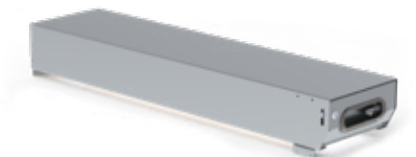
- Aluminum
- 320 lb capacity
- Open interior for tool bags & cases
- 16"W x 48"L x 19"H
- Lockable



Description	Part#
Tool Drawer	176XXJTD

Parts Drawer

- Aluminum
- 150 lb capacity
- Dividers for parts and hand tools
- Stack 1, 2 or 3 above your jumbo tool drawer
- 12"W x 48"L x 6"H
- Lockable



Description	Part#
Parts Drawer	176XXPD

Top Tray

- Turn your parts drawer top into additional organization
- Add 3 crates (optional)
- 12"W x 48"L x 4"H



Description	Part#
Top Tray	176XXTT
Top Tray With Crates	176XXTWC

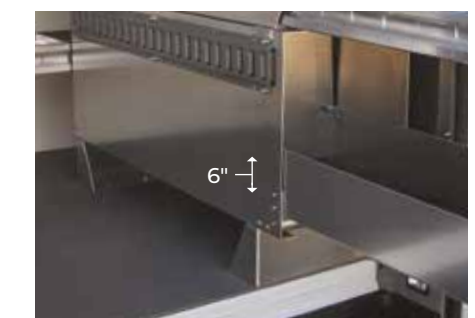
Add a Worktop to Your Drawer System

- 18"D x 48"W hardwood butcher block top



Description	Part#
Drawer System Worktop	176XXWT

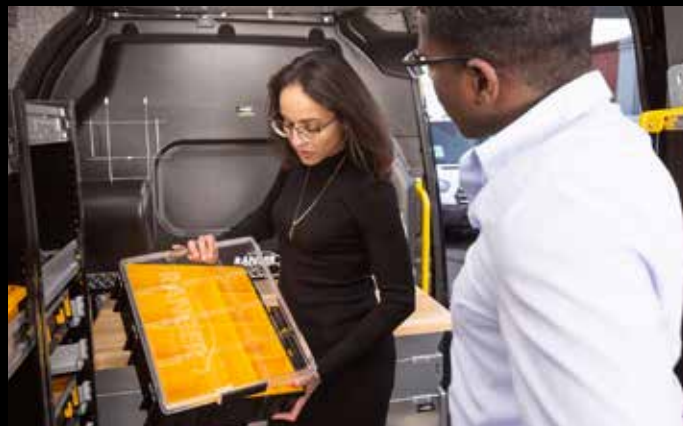
Add a Raise For Long Pipe or Lumber



Description	Part#
Raises (set of 2)	176XX6R-2

Maximize your Productivity!

Bring all of your small parts in one trip



Incorporate time saving Parts Keepers into your upfit:

1) Add single Parts Keeper units onto your shelves

2) Mount a Parts Keeper cabinet at your side door for easy access



Parts Keeper Parts Organizer Carry Case

- Includes 8-4"x4" (62-U6205) and 2-4"x8" (62-U6210) bins.
- 16.5"W x 13"W x 4"D



Description	Part#
Standard Keeper Carry Case	176XXPC

Single Parts Keeper Unit

- Includes one case
- 3 mounting styles:
 - under shelf,
 - inset into shelf,
 - or stacked
- 14"D x 18"W x 5"H



Description	Part#
Single Parts Keeper	176XXSTD

Be Efficient!
Saving just 5 minutes per day will gain you 21 hours per year!

4 Pc. Parts Keeper Cabinet

- 14"D x 18"W x 24"H



Description	Part#
4 Pc. Parts Keeper	176XX4PC-A

8 Pc. Parts Keeper Cabinet

- 14"D x 19"W x 44.5"H
- Available in Steel and Aluminum



Description	Part#
8 Pc. Parts Keeper Steel	176XX8PC
8 Pc. Parts Keeper Aluminum	176XX8PC-A

8 pc. Parts Keeper with two shelves

- 14"d x 19"w x 62"h
- Available in Steel and Aluminum



Description	Part#
8 Pc. Parts Keeper Steel	176XX8PC2
8 Pc. Parts Keeper Aluminum	176XX8PC2-A

2-Drawer & 3-Drawer Cabinets:

- Latching drawers with ball bearing slides
- Includes key lock for security
- Cabinets can be individually mounted to shelves or stacked on floor
- 12.5"D x 18.5"W x 10.5"H

9-Drawer Cabinet:

- Rattle-free plastic drawers with dividers
- Includes built-in drawer catch
- 12.5"D x 17"W x 12"H



Contractor Approved

“The drawers are super smooth and I couldn't be happier with them. High quality item.”

Leslie N.

2-Drawer Cabinet



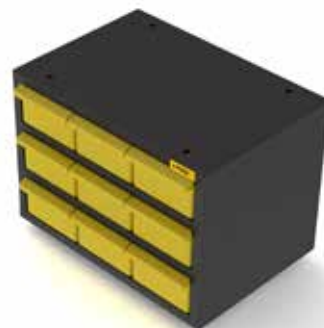
Description	Part#
2-Drawer Cabinet	876XX2DC

3-Drawer Cabinet



Description	Part#
3-Drawer Cabinet	876XX3DC

9-Drawer Cabinet



Description	Part#
9-Drawer Cabinet	876XX9DC

Locking Door



Description	Part#
36" Locking Door	876XX36LD
42" Locking Door	876XX42LD
48" Locking Door	876XX48LD
60" Locking Door	876XX60LD

Dividers (pack of 5)



Description	Part#
12" Adjustable Shelf Dividers	876XX12D
14" Adjustable Shelf Dividers	876XX14D
12" Extra-High Shelf Dividers	876XX12HD
14" Extra-High Shelf Dividers	876XX14HD

Bins



Description	Part#
12"D Plastic Bin	876XX12B
14"D Plastic Bin	876XX14B
Cross Dividers (set of 2)	876XXBD

Ladder Hook

- Use two to hang ladder from shelving
- Clips to shelving lip



Description	Part#
Ladder Hook	876XXLH

Swivel Hook



Description	Part#
Swivel Hook	864XXSW

Fixed Hook



Description	Part#
Fixed Hook	864XXFH

INTERIOR ACCESSORIES

INTERIOR ACCESSORIES

Cab Organizer Box



Description	Part#
Cab Organizer Box with Raise	876MXCB

3-Slot Paper Holder



Description	Part#
Steel 3-Slot Paper Holder	876XX3PH

First-Aid Kit



Description	Part#
First-Aid Kit With Holder	864XXFA

Triangle Kit



Description	Part#
Triangle Kit	876XXTK

Hard Hat Holder



Description	Part#
Hard Hat Holder	876XXHH

Grab Handle

- High grip surface
- Increase safety and efficiency



Description	Part#
Grab Handle	876XXGH



Small Bottle Holder

- For MC tanks



Description	Part#
Small Bottle Holder	864XXSBH

Large Bottle Holder

- For B tanks and nitrogen tanks



Description	Part#
Large Bottle Holder	864XXLBH

Refrigerant Rack Three Level

- For 30lb and 50lb refrigerant tanks



Description	Part#
Refrigerant Rack 3 Tier	876XX3BH

Refrigerant Rack Four Level

- For 30lb refrigerant tanks



Description	Part#
Refrigerant Rack 4 Tier	876XX4BH

Refrigerant Rack Five Level

- For 30lb and 50lb refrigerant tanks



Description	Part#
Refrigerant Rack 5 Tier	876XX5BH

INTERIOR ACCESSORIES

INTERIOR ACCESSORIES

Side Dropdown Ladder Rack

Rear Dropdown Ladder Rack

Max Rack

optional cross bar end stops available for a single sided rack for additional roof storage capacity



Single Side Drop Down



Double Side Drop Down



- All aluminum construction
- Removable rotation bar included
- Single side rack holds 1 extension ladder
- Double side rack holds 2 extension ladders
- Maximum extension ladder 32'
- Add optional third crossbar to hold stepladders, fits 8-10 foot stepladders only

Description	Single Side Part#	Double Side Part#
MaxRack with Roof Mounting Rails	376MXSR	376MXDR
MaxRack without Roof Mounting Rails (For Sprinters with OEM rails)	376MXSRO	376MXDRO

Ergo Rack



Single-Side Drop Down

Double-Side Drop Down

Description	Single Side Part#	Double Side Part#
Ergo Rack with Roof Mounting Rails	374MXSR	374MXDR
Ergo Rack without Roof Mounting Rails (For Sprinters with OEM rails)	374MXSRO	374MXDRO

- Aluminum and steel construction
- Removable rotation bar included
- Single side rack holds 1 extension ladder
- Double side rack holds 2 extension ladders
- Maximum extension ladder size is 36 foot
- Add optional third crossbar to hold stepladders, fits 6-10' foot stepladders only

Access Stow

- Rust-free aluminum and stainless construction
- Fast, easy operation
- Ergonomic and safe rear deployment
- Works for extension ladders up to 32' or step ladders up to 10'

Description	Single Ladder Part#	Double Ladder Part#
Access Stow with Roof Mounting Rail	376MXSS	376MXDS
Access Stow without Roof Mounting Rails (For Sprinters with OEM rails)	376MXSSO	376MXDSO



Single Rear Deploy



Double Rear Deploy



Our 6 Step Process

Start with Interior Finishing 01	Add Safety and Security 02	Choose your Shelving Package 03
Add time-saving Interior Accessories 04	Select your Roof Equipment 05	Finish with Exterior Accessories 06

Roof Decks

- Heavy duty anodized aluminum construction
- Aerodynamically designed
- Includes rear roller
- Optional ratchet tie downs to secure any type of load



Model	Part#
144" LR	376M1RD
144" HR	376M2RD
170"/170" HR Ext	376M4RD

Ratchet tie downs available for roof deck, see page 39



Cargo Racks

- Rust-free aluminum construction
- Includes ladder stops & straps
- Optional rear roller to aid in loading and protect brake lights

Model	Low Roof Part#	High Roof Part#
2 Bar Rack	395M12B	395M22B
3 Bar Rack	395M13B	395M23B
Rear Roller	395M1RR	395M2RR



*optional rear roller bar



NOTE:
Roof Rails required for Sprinters that don't have factory roof rails

Roof Rails Description	Part#
144" WB Roof Rails	774M1RR
170" WB Roof Rails	774M4RR
170" Ext WB Roof Rails	774M6RR

Access Ladders



Bolt-on



Clamp-on

- Heavy duty extruded aluminum
- Contoured to fit Sprinter
- White bolt-on ladder recommended for cargo racks
- Anodized clamp-on ladder recommended for roof decks

Model	Low Roof Part#	High Roof Part#
Bolt-on	795X1ALW	795X2ALW
Clamp-on	774MXALL	774MXALH

Conduit Carrier

- 5" square rigid one piece design
- White powder-coated aluminum with black end caps
- Inside length of 10' 8"
- Lockable
- Add to any ladder rack



Description	Part#
Conduit Carrier	774XXCT

Ratchet Tie-Downs

- Recommended two per side
- Safely secure any type of load



Model	Part#
Set of 2 for Roof Decks	376XXRTD
Set of 2 for Cargo Racks	795XXRTH1S

Grip Step Running Boards

- 7" wide stepping surface
- Black powder coat aluminum
- Open tread design for maximum grip
- 98" passenger's board and 36" drivers board



Description	Part#
Running Boards (Driver's side and passenger's side set)	760MXRB

Grip Step Rear Step

- Black powder-coated aluminum
- 7" wide stepping surface
- High traction open tread design

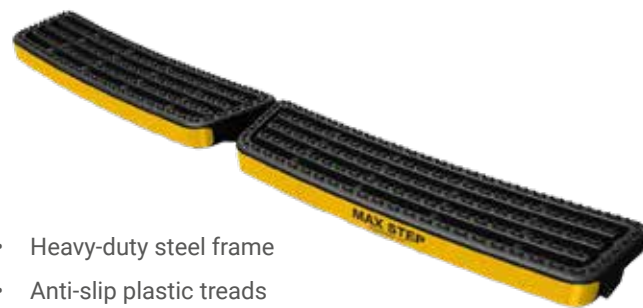


Description	Part#
Grip Step Rear Step	760MXBAS

* Rear steps not compatible with a hitch

Max Step Rear Step

- Heavy-duty steel frame
- Anti-slip plastic treads
- Reflective strip



Description	Part#
Max Rear Step	776MXBAS

* Rear steps not compatible with a hitch

Tow Hitches

- Class III (600 lb tongue weight, 6000 lb trailer weight)
- 4-way flat & 7-way wiring systems

* WARNING: Requires a Digital Brake Controller to enable trailer brakes.



Description	Part#
144" WB 2500 & All 170" WB with Standard Bumper	706M4HNB
144" WB 2500 & All 170" WB with Step Bumper	706M4HSB
144" WB 3500 with Step Bumper	706M3HSB
4-Way Flat Wiring Kit	506MX4TC
Duplex 7-Way/4-Way Wiring Kit*	506MX7TC
Digital Brake Controller*	506MXTBC

Windows

- OEM fit
- Light smoke tint



Description	Part#
Rear LH & RH*	707MXRW
Driver's Side Forward	743MXDSFW
Sliding Door	743MXSDW
Porthole	732XXPW

* Fits 2019+ vans only



EXTERIOR ACCESSORIES

EXTERIOR ACCESSORIES

HVAC Tie-In System

- Engine-driven system designed for generally moderate climates
 - Achieve an indoor temperature approximate 12-15 degrees below the maximum outside temperature
 - Adds a high-capacity evaporator in the cargo area
 - Ties in to vehicle's existing OEM compressor and condenser
 - Connects into vehicle's existing coolant lines for heat function
- Application Example:**
- Art Transport
 - Mobile Showrooms



NOTE.
Products shown on this page are not available for onsite install

Description	Part#
Tie-In HVAC System	997XXTI

HVAC Extreme Climate System

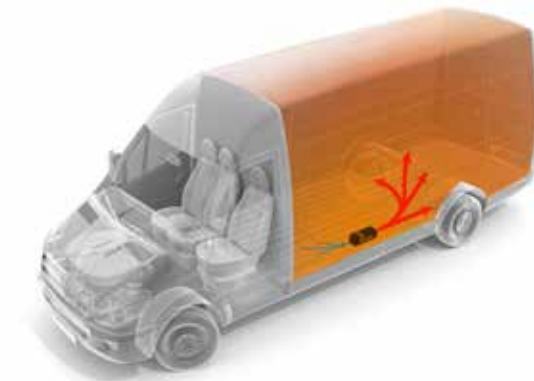
- Engine-driven system designed for the most demanding HVAC requirements
 - Achieve an indoor temperature of up to 30 degrees below the maximum outdoor temperature
 - Adds a high-capacity evaporator in the cargo area
 - Adds a powerful auxiliary compressor in the engine compartment
 - Adds an additional condenser (either rooftop mount or underbody options)
 - Connects into vehicle's existing coolant lines for heat function
- Application Example:**
- Animal Transport
 - Mobile Labs



Description	Part#
HVAC Extreme Climate System	Call for details

Fuel-fired Heaters

- High-performance combustion heater for safe, reliable heat
 - Powered through the vehicles existing fuel tank
 - Gas and diesel options
 - Pair with our auxiliary battery/charging system for vehicle-off operation
 - Compact design mounts almost anywhere on the floor
 - Uses as little as 1 gallon of fuel per 22 hour period
 - Up to 7,000 BTU/h heat output
- Application Example:**
- Carpet Cleaners
 - Mobile Pressure-Washers



Description	Part#
Fuel-Fired Heater, gas engines, with Standard Controller	997XXGSC
Fuel-Fired Heater, gas engines, with Programmable Controller	997XXPSC
Fuel-Fired Heater, diesel engines, with Standard Controller	997XXDSC
Fuel-Fired Heater, diesel engines, with Programmable Controller	997XXPSC

Compact Power Inverters

- Pure Sine Wave – safe for electronics and lithium-ion chargers
- 1,200W - 2,000W options
- Perfect for occasional and light/medium loads
- Runs most basic hand tools, chargers, and small appliances
- Single GFCI outlet built into unit



NOTE.
Products shown on this page are not available for onsite install

Description	Part#
1,200W Pure Sine Wave Inverter with cabling & fuse	596XX1.2PI
Bluetooth Adaptor for 1,200W Inverter	596XXBD
Remote Switch for 1,200W Inverter	596XXRS
2,000W Pure Sine Wave Inverter with cabling & fuse	503XX2PI-HF
Remote Switch for 2,000W Inverter	503XXRS

Heavy Duty Power Inverter/Charger Systems

- Designed for daily use in industrial applications
- 3,000W - 10,000W options
- Perfect for utilities, mobile workstations, and high-surge loads
- Hardwire only - configure with multiple outlets and shore power charging
- Bluetooth-enabled plus remote monitoring options



*110V outlets and shore power inlet not included – call to configure

Description	Part#
3000W Pure Sine Wave Inverter/Charger* with cabling & fuse	596XX3PI
5000W Pure Sine Wave Inverter/Charger* with cabling & fuse	596XX5PI
Digital Remote Control Panel	596XXRC

Auxiliary Batteries

- Enables inverter operation with vehicle off
- Provides reserve power for high-surge loads
- 100AH-460AH battery bank options
- Isolated from OEM battery for reliable starts
- Automatically charged via vehicle alternator or optional shore power



Description	Part#
100AH AGM Deep-Cycle Battery with Isolator and Battery Box	503XX1AB-B
200AH AGM Deep-Cycle Battery with Isolator and Battery Box	503XX2AB-B
Battery Monitor – Bluetooth enabled	596XXBMS

Cantilever Series

- Most popular model
- 1300lb capacity
- Folds to allow rear door access while stowed
- 53"W x 60"L Load Area
- Built in cart stops



NOTE.
Products shown on this page are not available for onsite install

Description	Part#
All Sprinters (Except 3500/4500 144" WB)	989MXCS
3500/4500 144" Sprinter Only	989M2CS*

* Available on special order only

V2 Series

- 1100lb capacity
- Stores inside van
- 47"W x 49"L Load Area
- Built in cart stops



Description	Part#
All Sprinters (Except 3500/4500 144" WB)	989MXV2*
3500/4500 144" Sprinter Only	989M2V2*

* Available on special order only

Cassette Series

- 700lb capacity
- Mounts below the van
- 32"W x 47"L Load Area
- Built in cart stops

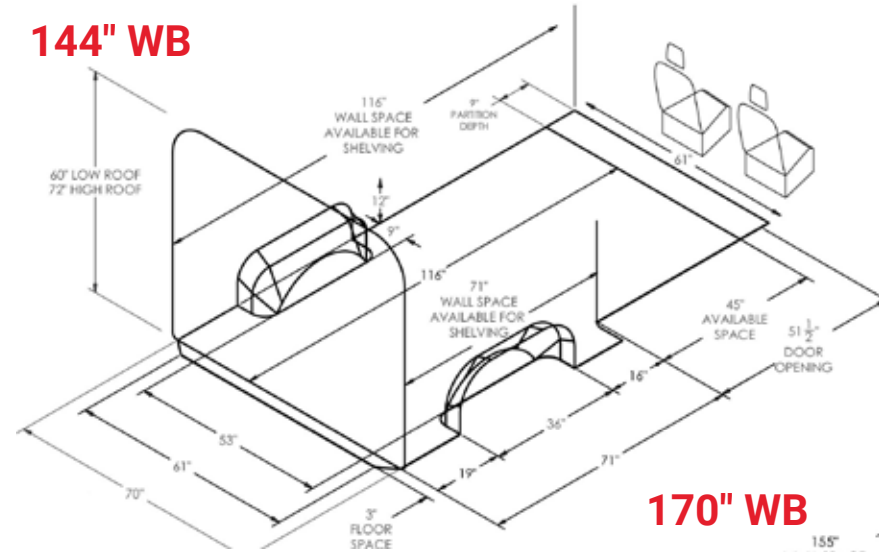


Description	Part#
All Sprinters (Except 3500/4500 144" WB)	989MXCT*
3500/4500 144" Sprinter Only	989M2CT*

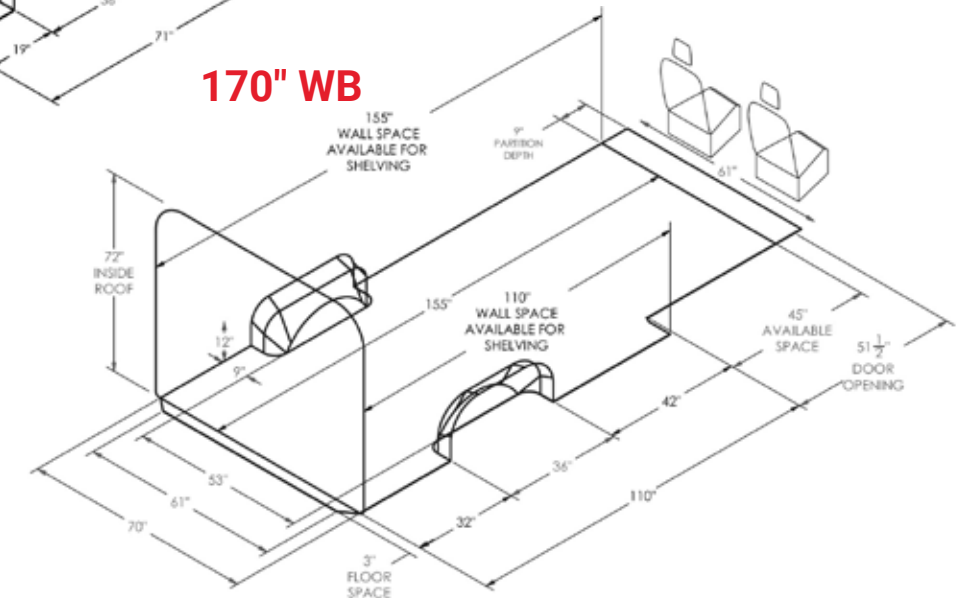
Note.
Sprinter step bumpers must be removed for liftgates to be installed.

* Available on special order only

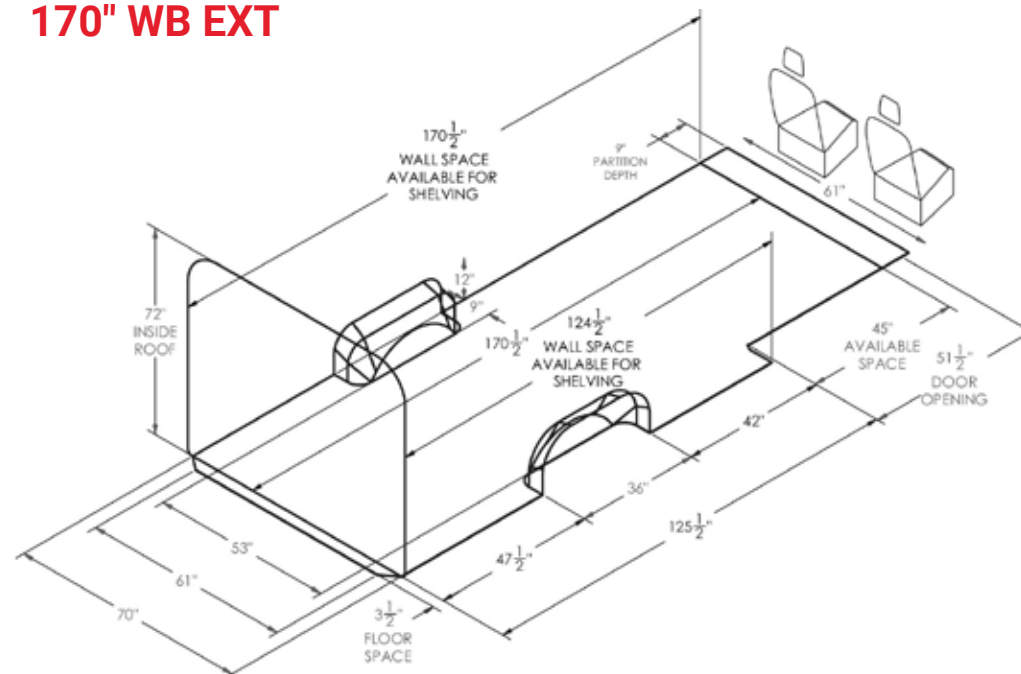
144" WB



170" WB



170" WB EXT



7500+

Vans Upfitted Per Year

Your Sprinter Customizing Starts Here.

Let Advantage Outfitters make your van work ready!

95% Stock Orders Completed in 48 Hours or Less



Serving the tri-state region
New York · New Jersey · Connecticut

Contact Your Mercedes Dealer



WEST
255 West Street
South Hackensack,
NJ 07606

EAST
107 E. Hawthorne Ave.
Valley Stream,
NY 11580

sales@advantageoutfitters.com

866.925.4844

advantageoutfitters.com