

Transit

Upfit Guide



**WORK VEHICLES
THAT WORK BETTER!**

advantage
OUTFITTERS

What's the Advantage?



We make it Easy

- Simplified layout and design process
- Technical support and configuration assistance

We make it Fast

- Everything in this catalog is in stock
- Installs within 48 hours or less

We make it Last

- Certified and trained Installers
- Lifetime Installation Warranty

Advantage Outfitters is a commercial vehicle upfitter, specializing in storage equipment and accessories for cargo vans. With 20+ years of experience, we have earned the trust of contractors, trade fleets, utilities, municipalities, vehicle dealers, and leasing companies. We are defined by our strong team spirit and our passion for making work vehicles work better.



sales@advantageoutfitters.com



866.925.4844

advantageoutfitters.com



A simple 6 step process to an efficient work van

01. Start with **Interior Finishing**

02. Add a **Safety Partition**

03. Choose your **Shelving Package**
04. Add time-saving **Interior Accessories**

05. Select your **Roof Equipment**

06. Finish with **Exterior Accessories**

Contents

Interior Finishing	04 - 07
Wall Liners	04
Flooring	05
Lashing / Seat Covers / Window Grills	06
Interior Lighting	07
Safety Partitions	08 - 09
Straight Partitions	08
Contoured Partitions	09
Shelving Packages	12 - 17
Base	12
General Service	13
HVAC	14
Electrical	15
Plumbing	16
Delivery	17

Interior Accessories	19-25
Side-Door Drawer Systems	19
Parts Keepers	20-21
Drawer Cabinets	22
Shelving Accessories	23
Cab Accessories	24
Bottle Holders	25
Roof Equipment	26 - 29
Side Dropdown	26
Rear Dropdown	27
Roof Decks and Cargo Racks	28
Ladder Rack Accessories	29
Exterior Accessories	30 - 31
Running Boards / Rear Steps	30
Hitches / Windows / Locks	31
Specialty Equipment	32-35
Climate Control	32
Inverters	33
Liftgates	34
Vehicle Layouts	35

VanLiner Wall and Door Protection

- 3/16" Rigid gray plastic with textured finish
- Protect your vehicle investment
- Highly durable & impact resistant



Model	Wall Panels Part#	Door Panels Part#
130" WB LR	601F11WL	601FX1DP
130" WB MR	601F12WL	601FX2DP
148" WB LR	601F21WL	601FX1DP

Model	Wall Panels Part#	Door Panels Part#
148" WB MR	601F22WL	601FX2DP
148" WB HR	601F23WL	601FX3DP
148" WB Ext HR	601F33WL	601FX3DP

Duratherm Insulated Kits

- 1/4" Heavy duty rigid grey plastic wall protection with 1/8" foil/foam insulation layer
- Provides sound deadening and an R4 equivalent thermal barrier
- Textured surface is scratch and impact resistant



Model	Wall Liners Part#	Door Liners Part#	Ceiling Liners Part#
130" WB LR	654F11WL	654FX1DP	654F11CL
130" WB MR	654F12WL	654FX2DP	654F12CL
148" WB LR	654F21WL	654FX1DP	654F21CL
148" WB MR	654F22WL	654FX2DP	654F22CL
148" WB HR	654F23WL	654FX3DP	654F23CL
148" Ext WB HR	654F33WL	654FX3DP	654F33CL

Floor Protection

Rubber Mat

- 1/4" virgin rubber resists oils and chemicals
- Saves knees and increases traction
- One piece seamless



Model	Rubber Floor Mat Part#
130" WB	654F1XRM
148" WB	654F2XRM
148" WB Ext	654F3XRM
148" WB Ext Dual Rear Wheel	654F3XRMD

StabiliGrip Floor

- 1/2" rubberized plastic with fiberglass reinforcement
- Provides firm base for tools and equipment
- Durable, non-skid surface



Model	StabiliGrip Floor Part#
130" WB	654F1XSG
148" WB	654F2XSG
148" WB Ext	654F3XSG
148" WB Ext Dual Rear Wheel	654F3XSGD

Door Sills

- Custom fit, heavy-duty diamond plate aluminum sill plates
- Protects entry points and provides traction

Description	Part#
Rear & Side Sliding Door Sills	654FXRSS-D



Side Door Sill



Rear Door Sill

Wheel Well Covers

- Decreases road noise and provides a thermal barrier.
- **Please Note:**
*Wheel Well Covers do not fit dual rear wheel vans

Description	Part#
Wheel Well Covers, set of 2	854FXWWC



Aluminum
Lashing Rail

- Durable & versatile
- Single level kits come with 5 movable tie-down rings
- Double level kits come with 10 movable tie-down rings
- Ratchet straps also available



Model	Single Level Part#	Double Level Part#
130" WB LR	842F1XLK	—
130" WB MR	842F1XLK	842F12LK2
148" WB LR	842F2XLK	—
148" WB MR/HR	842F2XLK	842F22LK2
148" WB Ext HR	842F33LK	842F33LK2
8' Ratchet Strap	842XX8RB	842XX8RB
6' Cam Buckle Strap	842XX6CB	842XX6CB

Seat Covers

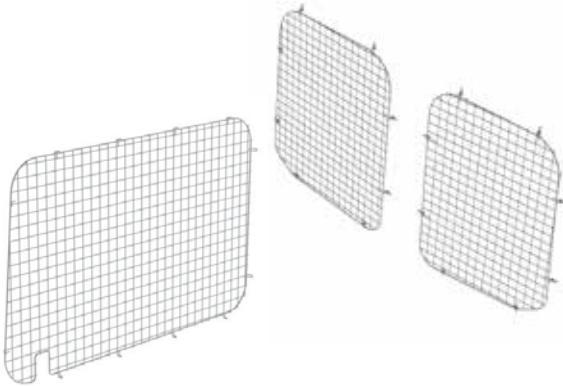
- Custom-fit
- Tough Cordura fabric
- Will not fit seats with thigh bolster



Description	Part#
Seat Covers (set of 2)	876FXSC

Window Grills

- Black painted wire mesh construction



Description	Low Roof#	Medium / High Roof#
Set of (2) for Side Swing Doors	876FX1SW	-
Side Sliding Door	876FX1SG	876FX2SG
Set of (2) for Rear Doors	876FX1RG	876FX2RG

Strip Lighting

- High intensity 2' LED light
- Mounts to side of ceiling ribs to maintain headroom
- Light is not compatible with ceiling liners
- Wired with OEM (door) switch
- 2 recommended for 130" & 148" WB vans
- 3 recommended for 148" Ext WB vans

Description	Part#
Single 2' LED light	452XXLD2



Motion Sensor Lighting



- Motion sensor activated
- Recommended for install with Duratherm ceilings
- 2 recommended for 130" & 148" WB vans
- 3 recommended for 148" Ext WB vans

Description	Part#
1 LED light	454XXLK1
2 LED lights	454XXLK2
3 LED lights	454XXLK3
Bracket and hardware	454XXBH*

* Required for vans without ceiling

Our 6 Step Process

Start with Interior Finishing01	Add a Safety Partition02	Choose your Shelving Package03
Add time-saving Interior Accessories04	Select your Roof Equipment05	Finish with Exterior Accessories06

Straight Partitions

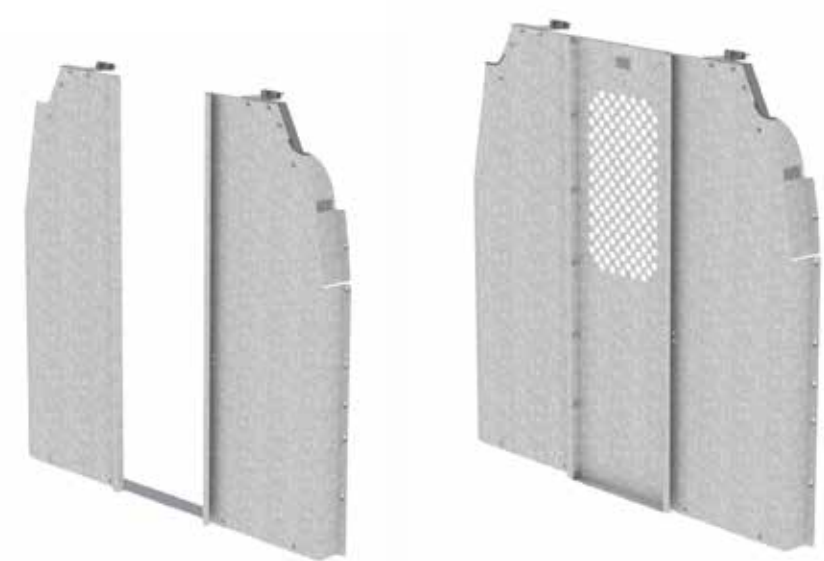
Partitions Without Door

Pass Through

- Galvanized steel
- 3.5" setback for increased cab space
- Drivers side and passenger panels only

Full Partition

- Galvanized steel
- 3.5" setback for increased cab space
- Includes a Mesh upper for visibility into rear
- Includes center panel



Pass Through

Full Partition

Description	Low Roof Part#	Medium Roof Part#	High Roof Part#
Pass Through	276FX1PTP	276FX2PTP	276FX3PTP
Full Partition	276FX1SP	276FX2SP	276FX3SP

Partitions With Door

Swing Door Partition

- Galvanized steel
- Hinged door with latch
- 3.5" setback for increased cab space
- Mesh upper for visibility into rear
- Versatile & economical
-

Sliding Door Partition

- Lightweight & durable aluminum
- Lockable sliding door
- Window for visibility into rear
- Rattle free design
- 3.5" setback for increased cab space



Swing Door Partition

Sliding Door Partition

Description	Low Roof Part#	Medium Roof Part#	High Roof Part#
Swing Door Partition	276FX1HDP	276FX2HDP	276FX3HDP
Sliding Door Partition	-	176FX2SDP	176FX3SDP

Contoured Partitions

Contoured Composite Partitions

- Designed for maximum impact resistance
- Thermally stable in any weather condition
- Perfect fit regulates heating and cooling in the cab
- Keeps dust and smells in the rear from getting into the cab
- 8" setback with recessed area for headrest



Solid Composite

Composite with Window

Description	Low Roof Part#	Medium Roof Part#	High Roof Part#
Solid Composite	176FX1P-C	176FX2P-C	176FX3P-C
Composite With Window	176FX1P-CW	176FX2P-CW	176FX3P-CW

Contoured Aluminum Partitions

- Lightweight & durable aluminum
- Contoured design gives 8" additional setback for increased cab space
- Tough and durable construction



Contoured Solid Partition

Contoured Partition with Window

Description	Low Roof Part#	Medium Roof Part#	High Roof Part#
Contoured Solid Partition	176FX1CP	176FX2CP	176FX3CP
Contoured Partition with Window	176FX1WP	176FX2WP	176FX3WP

Increase your productivity with our Trade-Specific Packages

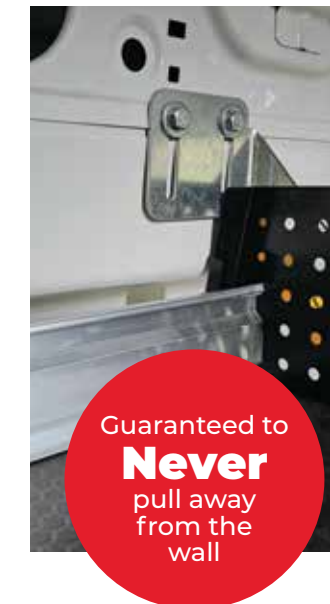


What's our Shelving Advantage?

Durable



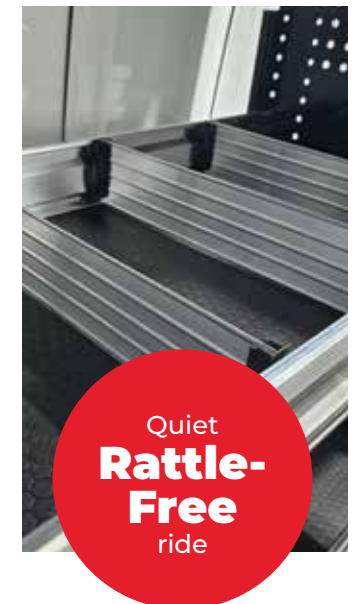
Secure



Lightweight



Quiet



Here's what our customers say about their outfitted vans

"My technicians are able to keep the vans organized, which increases our overall efficiency."

Mike S.
HVAC Service Company.



"You really helped us get the maximum benefit out of our vehicles."

Michael R.
Fire Protection Company.



Our 6 Step Process

Start with
Interior Finishing 01

Add a
Safety Partition 02

Choose your
Shelving Package 03

Add time-saving
Interior Accessories 04

Select your
Roof Equipment 05

Finish with
Exterior Accessories 06

Base Package — Low Roof

Partition
(choice of Straight or Swing Door)

Driver's side includes:

- (1) 45"H x 84"L 3-shelf shelving unit

Passenger's side includes:

- (1) 45"H x 48"L 3-shelf shelving unit



NOTE
96" DS shelving unit is also available.
*Flooring not included in shelving packages.

Model	Package with Straight Partition#	Package with Swing Door Partition#
Low Roof, all wheelbases	276FX1BP	276FX1BPD

General Service Package — Low Roof

Partition
(choice of Straight or Swing Door)

Driver's side includes:

- (1) 45"H x 84"L 3-shelf shelving unit
- (10) adjustable 3" rattle-free dividers
- (2) 18.5"W x 10.5"H 2-drawer cabinets
- (1) fixed hook

Passenger's side includes:

- (1) 45"H x 48"L 3-shelf shelving unit
- (4) 14"D x 12"W plastic bins
- (1) swivel hook



NOTE
96" DS shelving unit is also available.
*Flooring not included in shelving packages.

Model	Package with Straight Partition#	Package with Swing Door Partition#
Low Roof, all wheelbases	276FX1GSP	276FX1GSPD

Base Package — Medium/High Roof

Partition
(choice of Straight or Swing Door)

Driver's side includes:

- (1) 62"H x 84"L 4-shelf shelving unit

Passenger's side includes:

- (1) 62"H x 48"L 4-shelf shelving unit



NOTE
96" DS shelving unit is also available.
*Flooring not included in shelving packages.

Model	Package with Straight Partition#	Package with Swing Door Partition#
Medium Roof, all wheelbases	276FX2BP	276FX2BPD
High Roof, all wheelbases	276FX3BP	276FX3BPD

General Service Package — Medium/High Roof

Partition
(choice of Straight or Swing Door)

Driver's side includes:

- (1) 62"H x 84"L 4-shelf shelving unit
- (10) adjustable 3" rattle-free dividers
- (2) 18.5"W x 10.5"H 2-drawer cabinets
- (1) fixed hook

Passenger's side includes:

- (1) 62"H x 48"L 4-shelf shelving unit
- (4) 14"D x 12"W plastic bins
- (1) swivel hook



NOTE
96" DS shelving unit is also available.
*Flooring not included in shelving packages.

Model	Package with Straight Partition#	Package with Swing Door Partition#
Medium Roof, all wheelbases	276FX2GSP	276FX2GSPD
High Roof, all wheelbases	276FX3GSP	276FX3GSPD

HVAC Package — Low Roof

Partition
(choice of Straight or Swing Door)

Driver's side includes:

- (1) 45"H x 84"L 3-shelf shelving unit
- (7) 14"D x 12"W plastic bins
- (2) 18.5"W x 10.5"H 2-drawer cabinets
- (1) large gas bottle holder
- (1) fixed hook

Passenger's side includes:

- (1) 45"H x 48"L 3-shelf shelving unit
- (10) adjustable 3" rattle-free dividers
- (1) 43"H x 13.5" W 3-level refrigerant rack
- (1) swivel hook



NOTE
96" DS shelving unit is also available.
*Flooring not included in shelving packages.

Model	Package with Straight Partition#	Package with Swing Door Partition#
Low Roof, all wheelbases	276FX1HP	276FX1HPD

Plumbing Package — Low Roof

Partition
(choice of Straight or Swing Door)

Driver's side includes:

- (1) 45"H x 84"L 3-shelf shelving unit
- (5) adjustable 3" rattle-free dividers
- (1) 18.5"W x 10.5"H 2-drawer cabinet
- (1) 18.5"W x 10.5"H 3-drawer cabinet
- (1) large gas bottle holder
- (1) fixed hook

Passenger's side includes:

- (1) 45"H x 48"L 4-shelf shelving unit
- (12) 14"D x 12"W plastic bins
- (12) cross dividers for plastic bins
- (1) large gas bottle holder
- (1) swivel hook



NOTE
96" DS shelving unit is also available.
*Flooring not included in shelving packages.

Model	Package with Straight Partition#	Package with Swing Door Partition#
Low Roof, all wheelbases	276FX1PP	276FX1PPD

HVAC Package — Medium/High Roof

Partition
(choice of Straight or Swing Door)

Driver's side includes:

- (1) 62"H x 84"L 4-shelf shelving unit
- (7) 14"D x 12"W plastic bins
- (2) 18.5"W x 10.5"H 2-drawer cabinets
- (1) large gas bottle holder
- (1) fixed hook

Passenger's side includes:

- (1) 62"H x 48"L 4-shelf shelving unit
- (10) adjustable 3" rattle-free dividers
- (1) 43"H x 13.5" W 3-level refrigerant rack
- (1) swivel hook



NOTE
96" DS shelving unit is also available.
*Flooring not included in shelving packages.

Model	Package with Straight Partition#	Package with Swing Door Partition#
Medium Roof, all wheelbases	276FX2HP	276FX2HPD
High Roof, all wheelbases	276FX3HP	276FX3HPD

Plumbing Package — Medium/High Roof

Partition
(choice of Straight or Swing Door)

Driver's side includes:

- (1) 62"H x 84"L 4-shelf shelving unit
- (10) adjustable 3" rattle-free dividers
- (1) 18.5"W x 10.5"H 2-drawer cabinet
- (1) 18.5"W x 10.5"H 3-drawer cabinet
- (1) large gas bottle holder
- (1) fixed hook

Passenger's side includes:

- (1) 62"H x 48"L 5-shelf shelving unit
- (16) 14"D x 12"W plastic bins
- (16) cross dividers for plastic bins
- (1) large gas bottle holder
- (1) swivel hook



NOTE
96" DS shelving unit is also available.
*Flooring not included in shelving packages.

Model	Package with Straight Partition#	Package with Swing Door Partition#
Medium Roof, all wheelbases	276FX2PP	276FX2PPD
High Roof, all wheelbases	276FX3PP	276FX3PPD

Electrical Package — Low Roof

Partition
(choice of Straight or Swing Door)

- Driver's side includes:**
- (1) 45"H x 84"L 3-shelf shelving unit
 - (7) 14"D x 12"W plastic bins
 - (1) 11"H x 48"L locking cabinet
 - (1) 11"H x 36"L locking cabinet
 - (1) 18.5"W x 10.5"H 2-drawer cabinet
 - (1) 18.5"W x 10.5"H 3-drawer cabinet
 - (1) wire reel holder
 - (1) fixed hook

- Passenger's side includes:**
- (1) 45"H x 48"L 3-shelf shelving unit
 - (10) adjustable 3" rattle-free dividers
 - (1) swivel hook



NOTE
96" DS shelving unit is also available.
*Flooring not included in shelving packages.

Model	Package with Straight Partition#	Package with Swing Door Partition#
Low Roof, all wheelbases	276FX1EP	276FX1EPD

Electrical — Medium/High Roof

Partition
(choice of Straight or Swing Door)

- Driver's side includes:**
- (1) 62"H x 84"L 4-shelf shelving unit
 - (7) 14"D x 12"W plastic bins
 - (1) 11"H x 48"L locking cabinet
 - (1) 11"H x 36"L locking cabinet
 - (1) 18.5"W x 10.5"H 2-drawer cabinet
 - (1) 18.5"W x 10.5"H 3-drawer cabinet
 - (1) wire reel holder
 - (1) fixed hook

- Passenger's side includes:**
- (1) 62"H x 48"L 4-shelf shelving unit
 - (10) adjustable 3" rattle-free dividers
 - (1) swivel hook



NOTE
96" DS shelving unit is also available.
*Flooring not included in shelving packages.

Model	Package with Straight Partition#	Package with Swing Door Partition#
Medium Roof, all wheelbases	276FX2EP	276FX2EPD
High Roof, all wheelbases	276FX3EP	276FX3EPD

Delivery Package — Medium/High

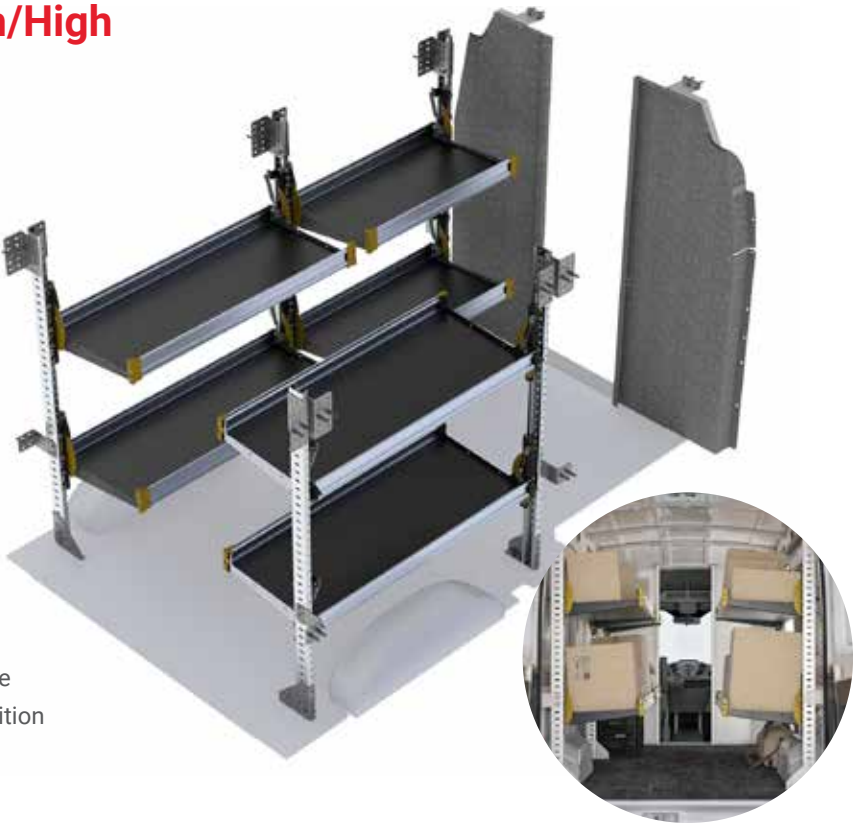
Partition
(Pass-thru)

- Driver's side includes:**
- (1) 63"H x 48"L 2-shelf unit with folding shelves
 - (1) 63"H x 36"L 2-shelf unit with folding shelves

- Passenger's side includes:**
- (1) 63"H x 48"L 2-shelf unit with folding shelves

Model	Pass Thru Partition#
Medium Roof, all wheelbases	176FX2DP
High Roof, all wheelbases	176FX3DP

- Folding shelves keep aisle clear when not in use
- Gas shock holds shelf in either up or down position — no latches or rattles
- Capacity is 250 lbs per shelving unit
- Shelves are 20" deep



DO YOU HAVE
A FLEET OF
10+ VANS?

Contact us to learn about
our fleet upfit solutions



Switching
your fleet to
E-Transits?

We can help make the
transition easy while
maximizing your range

Organized Time Saver

Access your most common items without even entering your vehicle.



Build a drawer system that works best for you

- 01. Start with a **Tool Drawer** for power tools and bags
- 02. Add **Parts Drawers** for hand tools and components
- 03. Finish with a **Top Tray** and crates or a **Worktop** surface

Our 6 Step Process

Start with Interior Finishing01

Add time-saving Interior Accessories04

Add a Safety Partition02

Select your Roof Equipment05

Choose your Shelving Package03

Finish with Exterior Accessories06

Side-Door Drawer Systems

Standard Tool Drawer

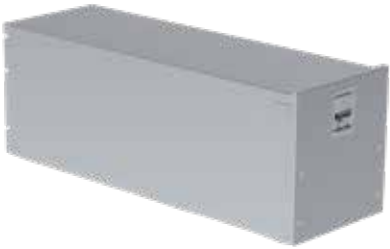
- Aluminum
- Weight capacity: 320 lbs.
- Open interior for tool bags & cases
- 14"W x 48"L x 16"
- Lockable



Description	Part#
Standard Tool Drawer	176XXSTD

Jumbo Tool Drawer

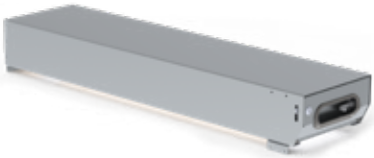
- Aluminum
- Weight capacity: 320 lbs.
- Open interior for tool bags & cases
- 16"W x 48"L x 19"H
- Lockable



Description	Part#
Jumbo Tool Drawer	176XXJTD

Parts Drawer

- Aluminum
- Weight capacity: 150 lbs.
- Dividers for parts and hand tools
- Stack 1, 2 or 3 above your jumbo tool drawer
- 12"W x 48"L x 6"H
- Lockable



Description	Part#
Parts Drawer	176XXPD

Top Tray

- Turn your parts drawer top into additional organization
- Add 3 crates (optional)
- 12"W x 48"L x 4"H



Description	Part#
Top Tray	176XXTT
Top Tray With Crates	176XXTWC

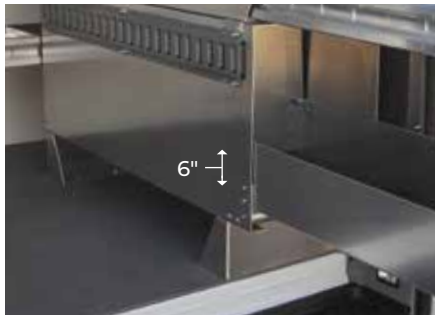
Add a Worktop to Your Drawer System

- 18"D x 48"W hardwood butcher block top
- Mounts to top of drawer system



Description	Part#
Drawer System Worktop	176XXWT

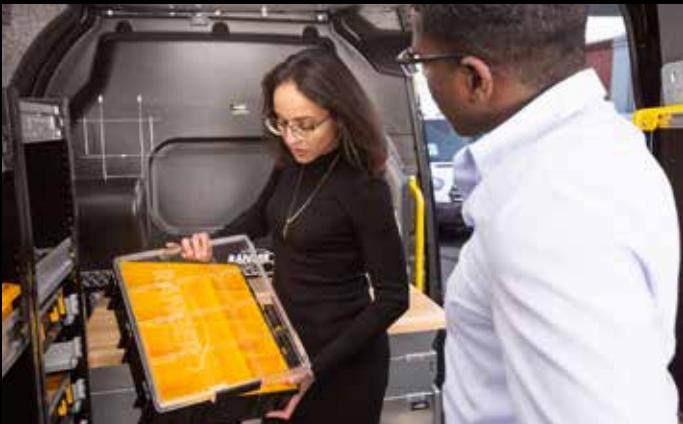
Add a Raise For Long Pipe or Lumber



Description	Part#
Raises (set of 2)	176XX6R-2

Maximize your
Productivity!

Bring all of your small
parts in one trip



Incorporate time saving
Parts Keepers into your
upfit:

1) Add single Parts Keeper units
onto your shelves

2) Mount a Parts Keeper cabinet
at your side door for easy access



Parts Keeper Parts
Organizer Carry Case

- Includes 8-4"x4" (62-U6205) and 2-4"x8" (62-U6210) bins.
- 16.5"W x 13"W x 4"D



Description	Part#
Standard Keeper Carry Case	176XXPCC

Single Parts Keeper Unit

- Includes one case
- 3 mounting styles:
 - under shelf,
 - inset into shelf,
 - or stacked
- 14"D x 18"W x 5"H



Description	Part#
Single Parts Keeper	176XXPC

Be Efficient!
Saving just 5 minutes per
day will gain you 21 hours
per year!

4 Pc. Parts Keeper Cabinet

- 14"D x 18"W x 24"H



Description	Part#
4 Pc. Parts Keeper	176XX4PC-A

8 Pc. Parts Keeper Cabinet

- 14"D x 19"W x 44.5"H
- Available in Steel and Aluminum



Description	Part#
8 Pc. Parts Keeper Steel	176XX8PC
8 Pc. Parts Keeper Aluminum	176XX8PC-A

8 pc. Parts Keeper
with two shelves

- 14"d x 19"w x 62"h
- Available in Steel and Aluminum



Description	Part#
8 Pc. Parts Keeper Steel	176XX8PC2
8 Pc. Parts Keeper Aluminum	176XX8PC2-A

2-Drawer & 3-Drawer Cabinets:

- Latching drawers with ball bearing slides
- Includes key lock for security
- Cabinets can be individually mounted to shelves or stacked on floor
- 12.5"D x 18.5"W x 10.5"H

9-Drawer Cabinet:

- Rattle-free plastic drawers with dividers
- Includes built-in drawer catch
- 12.5"D x 17"W x 12"H



The drawers are super smooth and I couldn't be happier with them. High quality item. 99

Leslie N.

Contractor Approved

2-Drawer Cabinet



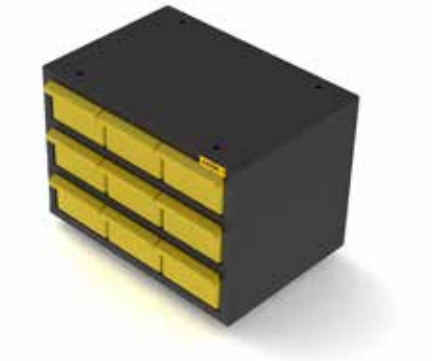
Description	Part#
2-Drawer Cabinet	876XX2DC

3-Drawer Cabinet



Description	Part#
3-Drawer Cabinet	876XX3DC

9-Drawer Cabinet



Description	Part#
9-Drawer Cabinet	876XX9DC

Locking Door



Description	Part#
36" Locking Door	876XX36LD
42" Locking Door	876XX42LD
48" Locking Door	876XX48LD
60" Locking Door	876XX60LD

Dividers (pack of 5)



Description	Part#
12" Adjustable Shelf Dividers	876XX12D
14" Adjustable Shelf Dividers	876XX14D
12" Extra-High Shelf Dividers	876XX12HD
14" Extra-High Shelf Dividers	876XX14HD

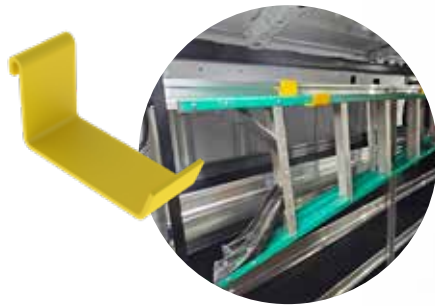
Bins



Description	Part#
12"D Plastic Bin	876XX12B
14"D Plastic Bin	876XX14B
Cross Dividers (set of 2)	876XXBD

Ladder Hook

- Use two to hang ladder from shelving
- Clips to shelving lip



Description	Part#
Ladder Hook	876XXLH

Swivel Hook



Description	Part#
Swivel Hook	864XXSW

Fixed Hook



Description	Part#
Fixed Hook	864XXFH

Cab Organizer Box



Description	Part#
Cab Organizer Box with Raise	876FXCB

3-Slot Paper Holder



Description	Part#
Steel 3-Slot Paper Holder	876XX3PH

First-Aid Kit



Description	Part#
First-Aid Kit With Holder	864XXFA

Triangle Kit



Description	Part#
Triangle Kit	876XXTK

Hard Hat Holder



Description	Part#
Hard Hat Holder	876XXHH

Grab Handle

- High grip surface
- Increase safety and efficiency



Description	Part#
Grab Handle	876XXGH



Small Bottle Holder

- For MC tanks



Description	Part#
Small Bottle Holder	864XXSBH

Large Bottle Holder

- For B tanks and nitrogen tanks



Description	Part#
Large Bottle Holder	864XXLBH

Refrigerant Rack 3 Tier

- For 30lb and 50lb refrigerant tanks



Description	Part#
Refrigerant Rack 3 Tier	876XX3BH

Refrigerant Rack Four Level

- For 30lb refrigerant tanks



Description	Part#
Refrigerant Rack 4 Tier	876XX4BH

Refrigerant Rack Five Level

- For 30lb and 50lb refrigerant tanks



Description	Part#
Refrigerant Rack 5 Tier	876XX5BH

Side Dropdown Ladder Rack

MaxRack



- All aluminum construction
- Removable rotation bar included
- Single side rack holds 1 extension ladder
- Double side rack holds 2 extension ladders
- Maximum extension ladder 32'
- Add optional third crossbar to hold stepladders, fits 8-10 foot stepladders only

Single Side Drop Down



Double Side Drop Down



Description	Single Sided Part#	Double Sided Part#
MaxRack for 130" Transit MR/HR	376F1XSR	376F1XDR
MaxRack for 148" and 148" Ext Transit MR/HR	376F2XSR	376F2XDR

* Low Roof (LR) MaxRack available - call for details

optional cross bar end stops available for a single sided rack for additional roof storage capacity

ErgoRack



- Aluminum and steel construction
- Removable rotation bar included
- Single side rack holds 1 extension ladder
- Double side rack holds 2 extension ladders
- Maximum extension ladder size is 36 foot
- Add optional third crossbar to hold stepladders, fits 6-10' foot stepladders only



Single-Side Drop Down

Description	Single Side Part#	Double Side Part#
ErgoRack for Transit MR/HR	374FXSR	374FXDR

* Low Roof (LR) ErgoRack available - call for details



Double-Side Drop Down

Rear Dropdown Ladder Rack

Access Stow

- Rust-free aluminum and stainless construction
- Fast, easy operation
- Ergonomic and safe rear deployment
- Works for extension ladders up to 32' or step ladders up to 10'

Description	Single Ladder Part#	Double Ladder Part#
Access Stow for 130" Transit	376F1XSS	376F1XDS
Access Stow for 148" and 148" Ext Transit	376F2XSS	376F2XDS



Single Rear Deploy



Double Rear Deploy



Our 6 Step Process

Start with Interior Finishing 01

Add a Safety Partition 02

Choose your Shelving Package 03

Add time-saving Interior Accessories 04

Select your Roof Equipment 05

Finish with Exterior Accessories 06

Roof Decks

- Heavy duty anodized aluminum construction
- Aerodynamically designed
- Includes rear roller
- Optional ratchet tie downs to secure any type of load



Model	Part#
130" WB LR	376F11RD
130" WB MR	376F12RD
148" WB LR	376F21RD
148" WB MR/HR	376F22RD
148" WB Ext HR	376F33RD

Cargo Racks

- Rust-free aluminum construction
- Includes ladder stops & straps
- Optional rear roller to aid in loading and protect brake lights



*optional rear roller bar

Model	Part#
2 Bar Rack	395FX2B
3 Bar Rack	395FX3B
Rear Roller	395FXRR
Rear Roller MR/HR	395FXRRH



Access Ladders



Bolt-on

- Heavy duty extruded aluminum
- Contoured to fit Transit
- White bolt-on ladder recommended for cargo racks
- Anodized clamp-on ladder recommended for roof decks



Clamp-on

Roof	Bolt-on Part#	Clamp-on Part#
Low Roof	795X0ALW	774FX1AL
Mid Roof	795X1ALW	774FX2AL
High Roof	795X2ALW	774FX3AL

Conduit Carrier

- 5" square rigid one piece design
- White powder-coated aluminum with black end caps
- Inside length of 10' 8"
- Lockable
- Add to any ladder rack



Description	Part#
Conduit Carrier	774XXCT

Ratchet Tie-Downs

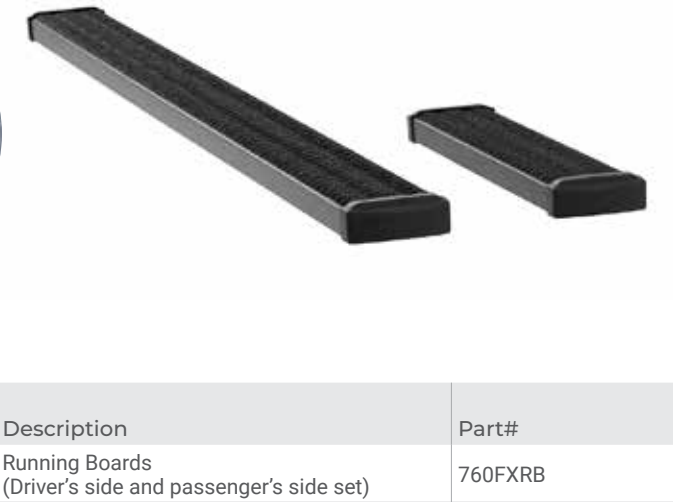
- Recommended two per side
- Safely secure any type of load



Model	Part#
Set of 2 for Roof Decks	376XXRTD
Set of 2 for Cargo Racks	795XXRTH1S

Grip Step Running Boards

- 7" wide stepping surface
- Black powder coat aluminum
- Open tread design for maximum grip
- 98" passenger's board and 36" drivers board



Description	Part#
Running Boards (Driver's side and passenger's side set)	760FXRB

*Not suitable for an E-Transit Model

Grip Step Rear Step

- Black powder-coated aluminum
- 7" wide stepping surface
- High traction open tread design

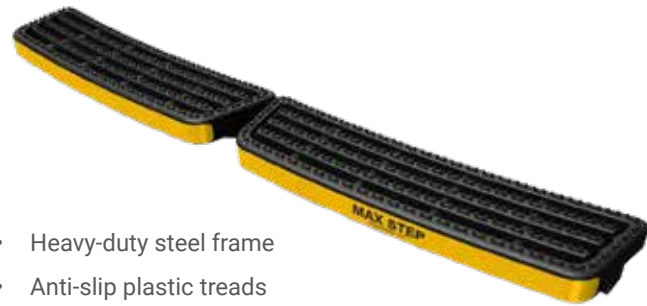


Description	Part#
Grip Step Rear Step	760FXBAS

* Rear steps not compatible with a hitch

Max Step Rear Step

- Heavy-duty steel frame
- Anti-slip plastic treads
- Reflective strip



Description	Part#
Max Rear Step	776FXBAS

* Rear steps not compatible with a hitch

Tow Hitches

- Class III (600 lb tongue weight, 6000 lb trailer weight)
- 4-way flat & 7-way wiring systems



Description	Part#
Hitch - Class III Hitch for All Models	706FXTH3
4-Way Flat Wiring Kit	506FX4TC
Duplex 7-way/4-way Wiring Kit*	506FX7TC
Digital Brake Controller	506XXTBC

* WARNING: Requires a Digital Brake Controller to enable trailer brakes.

Windows

- OEM fit
- Light smoke tint
- Only available for MR/HR vans



Description	Part#
Rear LH & RH	743FXRW
Driver's Side Forward	743FXDSFW
Sliding Door	743FXSDW
Porthole	732XXPW

Slick Locks

- High security hasps use factory mounting points
- Solid steel "puck" style locks included
- Custom fit for drill-free installation



Description	Part#
Set of 2 Slick Locks for Transit with Sliding Side Door	788FXSLS
Set of 2 Slick Locks for Transit with Swing Side Door	788FXSLH

HVAC Tie-In System

- Engine-driven system designed for generally moderate climates
 - Achieve an indoor temperature approximate 12-15 degrees below the maximum outside temperature
 - Adds a high-capacity evaporator in the cargo area
- Ties in to vehicle's existing OEM compressor and condenser
 - Connects into vehicle's existing coolant lines for heat function
- Application Example:**

 - Art Transport
 - Mobile Showrooms

Description	Part#
Tie-In HVAC System	997XXTI

HVAC Extreme Climate System

- Engine-driven system designed for the most demanding HVAC requirements
 - Achieve an indoor temperature of up to 30 degrees below the maximum outdoor temperature
 - Adds a high-capacity evaporator in the cargo area
 - Adds a powerful auxiliary compressor in the engine compartment
- Adds an additional condenser (either rooftop mount or underbody options)
 - Connects into vehicle's existing coolant lines for heat function
- Application Example:**

 - Animal Transport
 - Mobile Labs

Description	Part#
HVAC Extreme Climate System	Call for details

Fuel-fired Heaters

- High-performance combustion heater for safe, reliable heat
 - Powered through the vehicles existing fuel tank
 - Gas and diesel options
 - Pair with our auxiliary battery/charging system for vehicle-off operation
- Compact design mounts almost anywhere on the floor
 - Uses as little as 1 gallon of fuel per 22 hour period
 - Up to 7,000 BTU/h heat output
- Application Example:**

 - Carpet Cleaners
 - Mobile Pressure-Washers

Description	Part#
Fuel-Fired Heater, gas engines, with Standard Controller	997XXGSC
Fuel-Fired Heater, gas engines, with Programmable Controller	997XXPSC
Fuel-Fired Heater, diesel engines, with Standard Controller	997XXDSC
Fuel-Fired Heater, diesel engines, with Programmable Controller	997XXPSC



Compact Power Inverters

- Pure Sine Wave – safe for electronics and lithium-ion chargers
 - 1,200W - 2,000W options
 - Perfect for occasional and light/medium loads
- Runs most basic hand tools, chargers, and small appliances
 - Single GFCI outlet built into unit



Description	Part#
1,200W Pure Sine Wave Inverter with cabling & fuse	596XX1.2PI
Bluetooth Adaptor for 1,200W Inverter	596XXBD
Remote Switch for 1,200W Inverter	596XXRS
2,000W Pure Sine Wave Inverter with cabling & fuse	503XX2PI-HF
Remote Switch for 2,000W Inverter	503XXRS

Heavy Duty Power Inverter/Charger Systems

- Designed for daily use in industrial applications
 - 3,000W - 10,000W options
 - Perfect for utilities, mobile workstations, and high-surge loads
- Hardwire only - configure with multiple outlets and shore power charging
 - Bluetooth-enabled plus remote monitoring options



*110V outlets and shore power inlet not included – call to configure

Description	Part#
3000W Pure Sine Wave Inverter/Charger* with cabling & fuse	596XX3PI
5000W Pure Sine Wave Inverter/Charger* with cabling & fuse	596XX5PI
Digital Remote Control Panel	596XXRC

Auxiliary Batteries

- Enables inverter operation with vehicle off
- Provides reserve power for high-surge loads
- 100AH-460AH battery bank options
- Isolated from OEM battery for reliable starts
- Automatically charged via vehicle alternator or optional shore power



Description	Part#
100AH AGM Deep-Cycle Battery with Isolator and Battery Box	503XX1AB-B
200AH AGM Deep-Cycle Battery with Isolator and Battery Box	503XX2AB-B
Battery Monitor – Bluetooth enabled	596XXBMS

Cantilever Series

- Most popular model
- 1300lb capacity
- Folds to allow rear door access while stowed
- 53"W x 60"L Load Area
- Built in cart stops

Description	Part#
Low Roof Vans	989FX1CS**
MR/HR vans (except 148"WB EXT)	989FX2CS
148"WB EXT vans only	989F3XCS

* Available on special order only
** This model has a shorter platform, load area is 53x40 instead of 53x60



NOTE.
Products shown
on this page are
not available for
onsite install

V2 Series

- 1100lb capacity
- Stores inside van
- 47"W x 49"L Load Area
- Built in cart stops

Description	Part#
Low Roof Vans	989FX1V2**
MR/HR vans (except 148"WB EXT)	989FX2V2
148"WB EXT vans only	989F3XV2

* Available on special order only
** This model has a shorter platform, load area is 47x34 instead of 47x49



Don't see what you're looking for?

Contact us to design a custom build,
we love a challenge!



Mobile Laboratory

Challenge: A manufacturer was looking to perform climate controlled hydraulic tool calibration onsite for their customers.



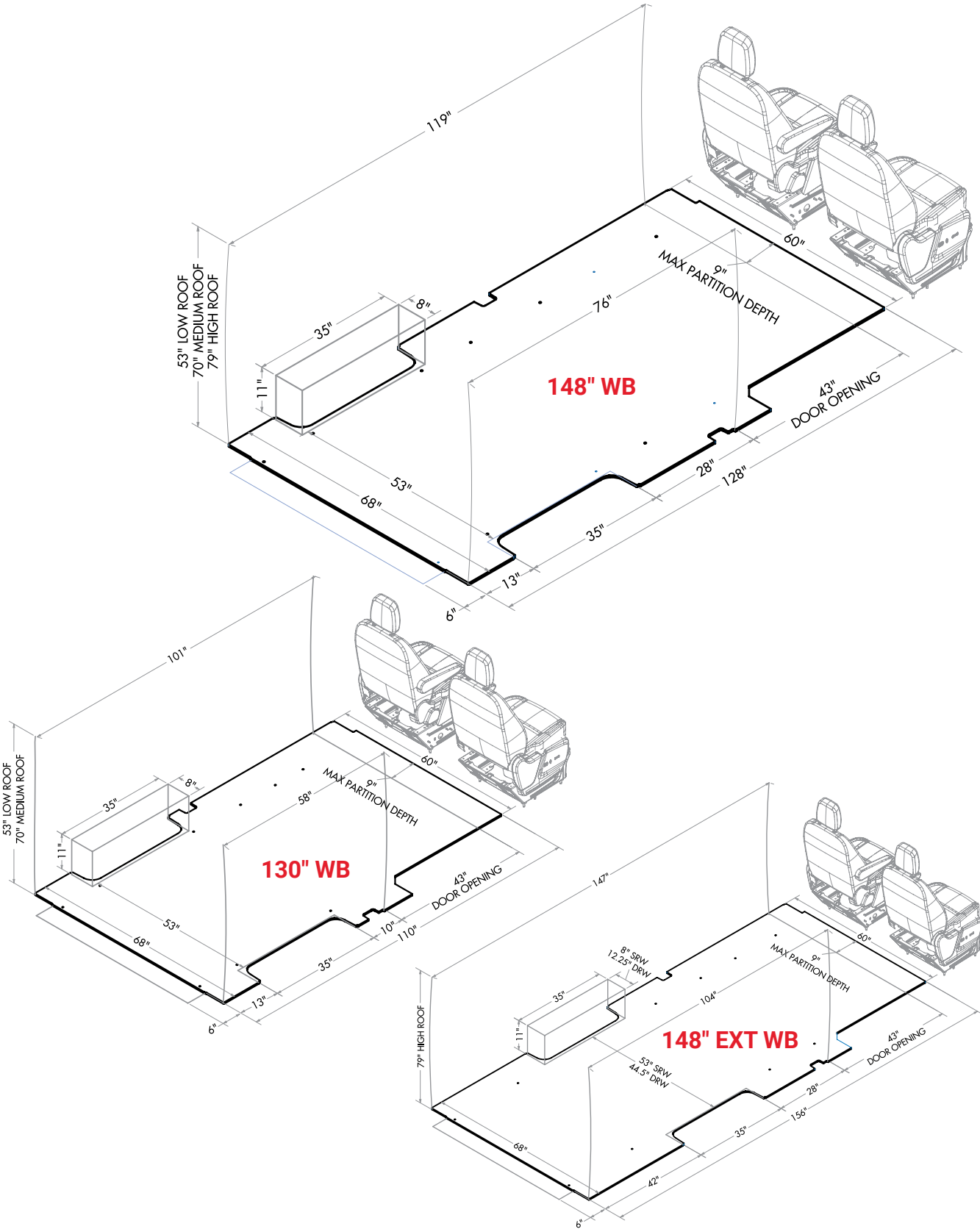
Incident Command

Challenge: A regional OEM was looking to manage agency communications and radio distribution at major emergency scenes.



Mobile Showroom

Challenge: A luxury stone & tile distributor was looking to grow their business by bringing their showroom to their clients.



7500+

Vans Upfitted Per Year

Your Transit Customizing Starts Here.

Let Advantage Outfitters
make your van work ready!

95% Stock Orders Completed in
48 Hours or Less



Serving the tri-state region

New York • New Jersey • Connecticut • Pennsylvania

Contact Your Transit Dealer



WEST

255 West Street
South Hackensack,
NJ 07606

EAST

107 E. Hawthorne Ave.
Valley Stream,
NY 11580

sales@advantageoutfitters.com

866.925.4844

advantageoutfitters.com